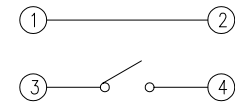
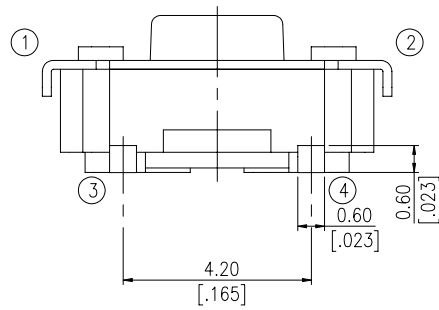
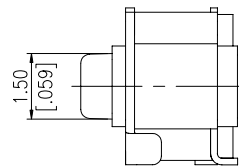
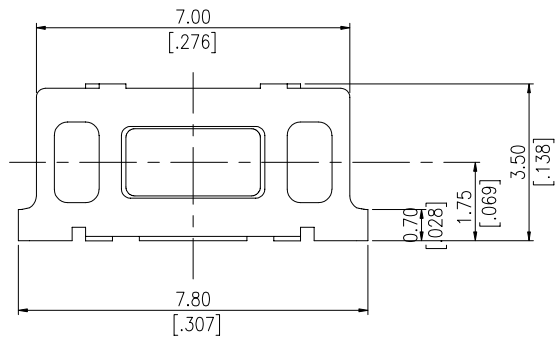
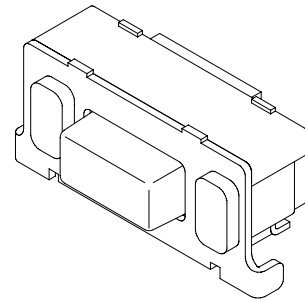
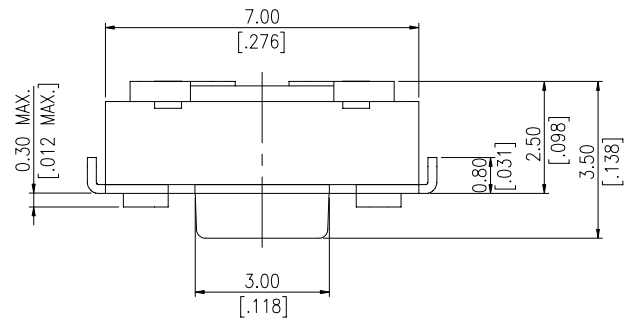
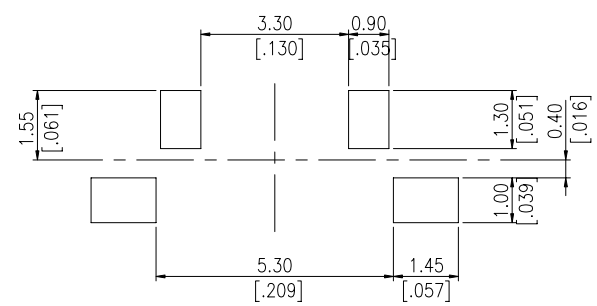


DIMENSIONS

1188-1



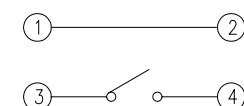
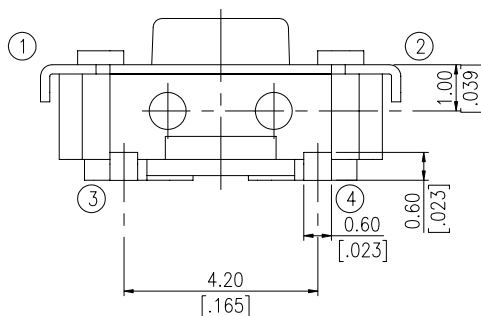
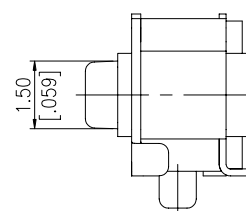
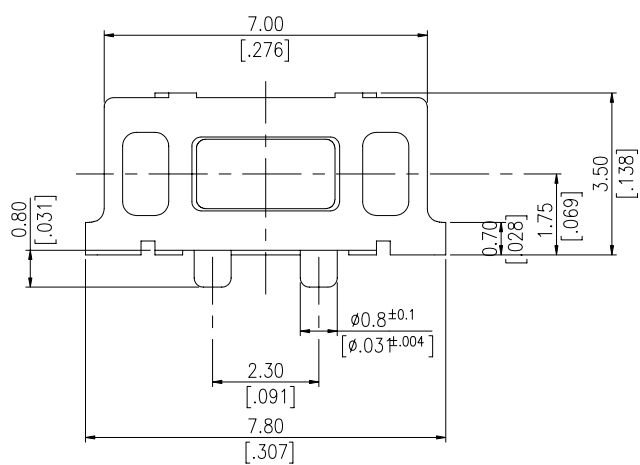
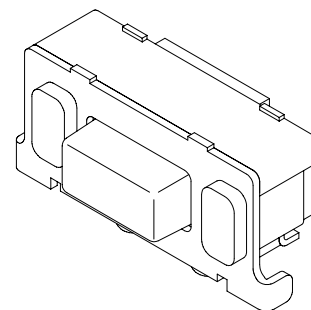
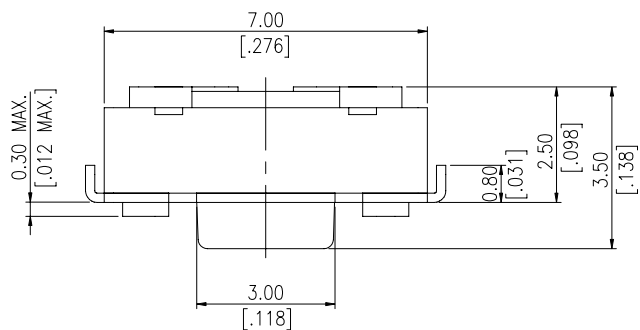
CIRCUIT



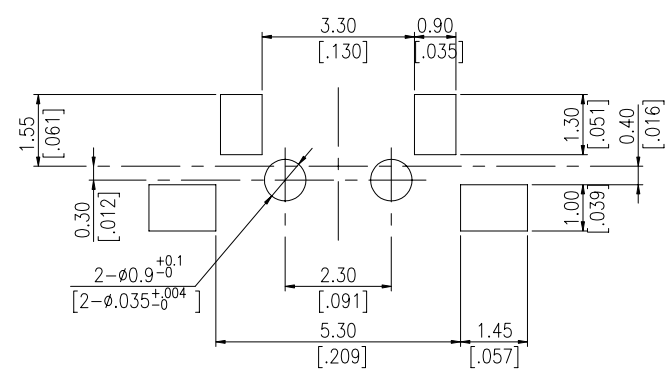
P.C.B. LAOUT

PART NO.	COLOR OF STEM	OPERATING FORCE
1188-1K2	BLACK	160±50gf
1188-1W3	WHITE	260±50gf

1188E-1



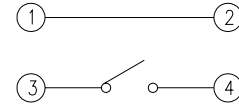
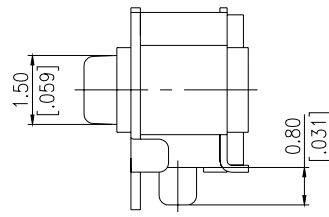
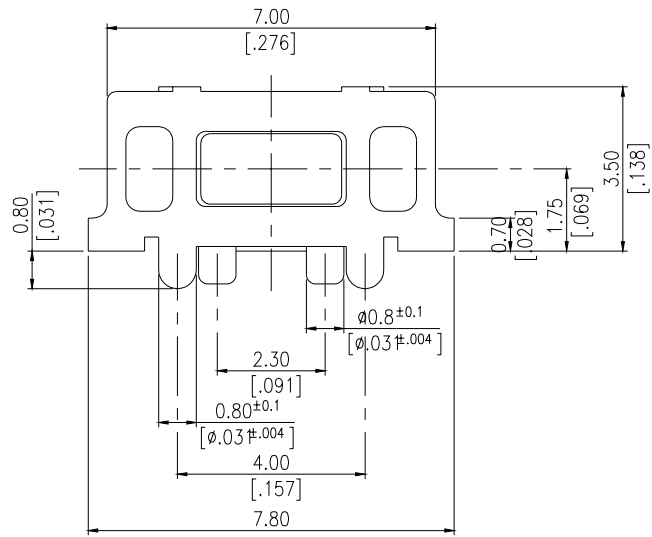
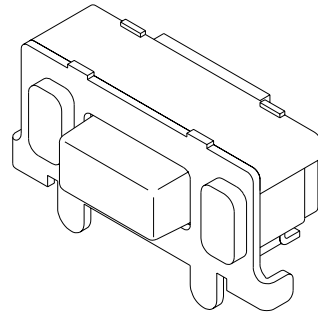
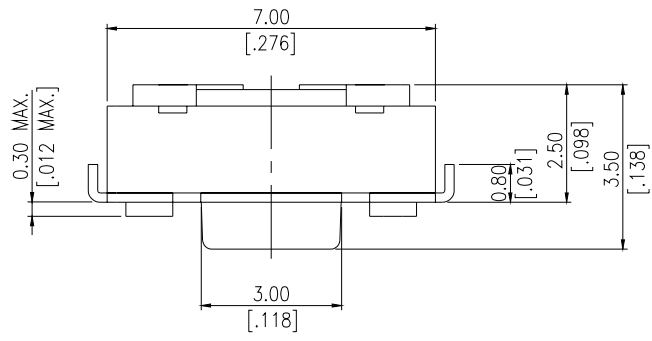
CIRCUIT



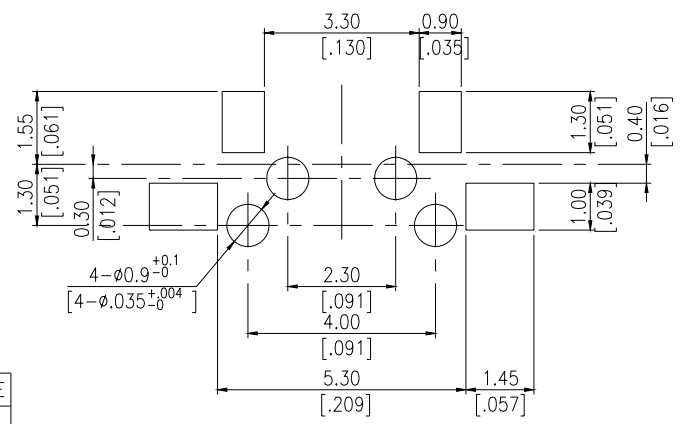
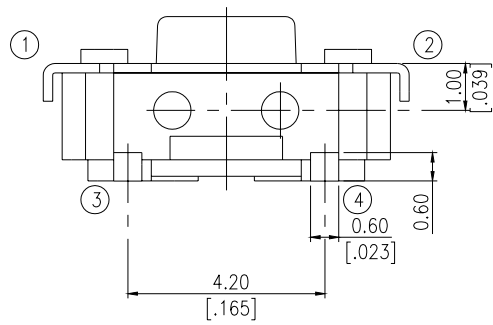
P.C.B. LAOUT

PART NO.	COLOR OF STEM	OPERATING FORCE
1188E-1K2	BLACK	160±50gf
1188E-1W3	WHITE	260±50gf

1188EP-1



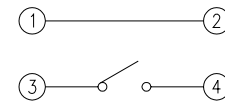
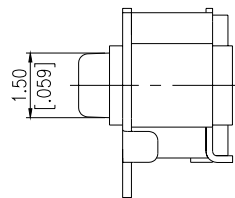
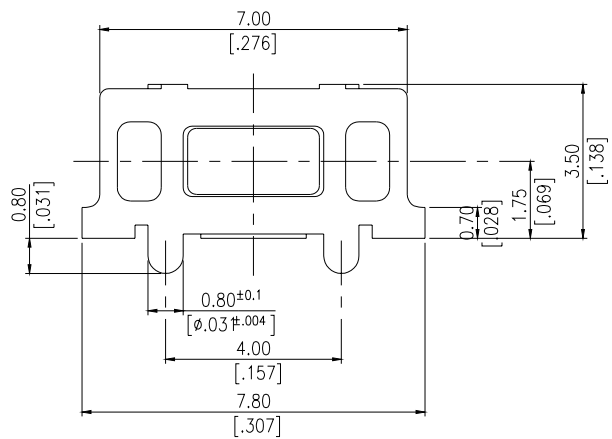
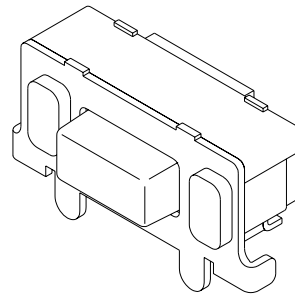
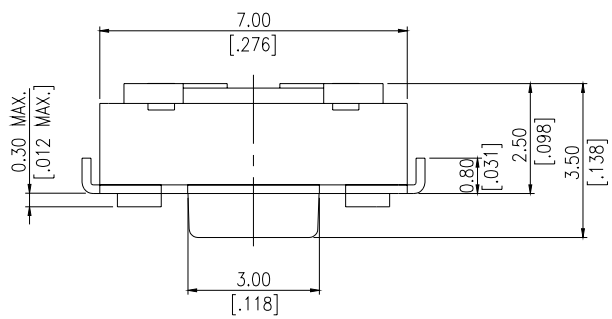
CIRCUIT



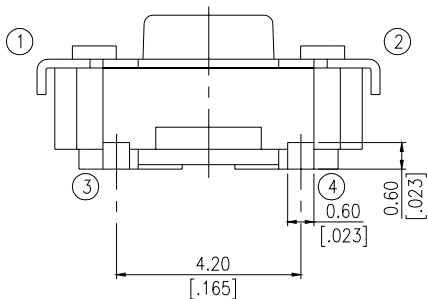
P.C.B. LAOUT

PART NO.	COLOR OF STEM	OPERATING FORCE
1188EP-1K2	BLACK	160±50gf
1188EP-1W3	WHITE	260±50gf

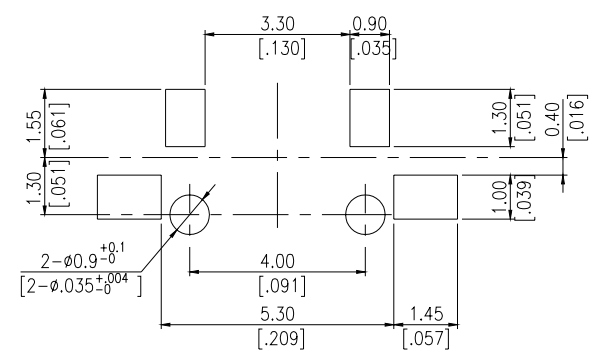
1188P-1



CIRCUIT



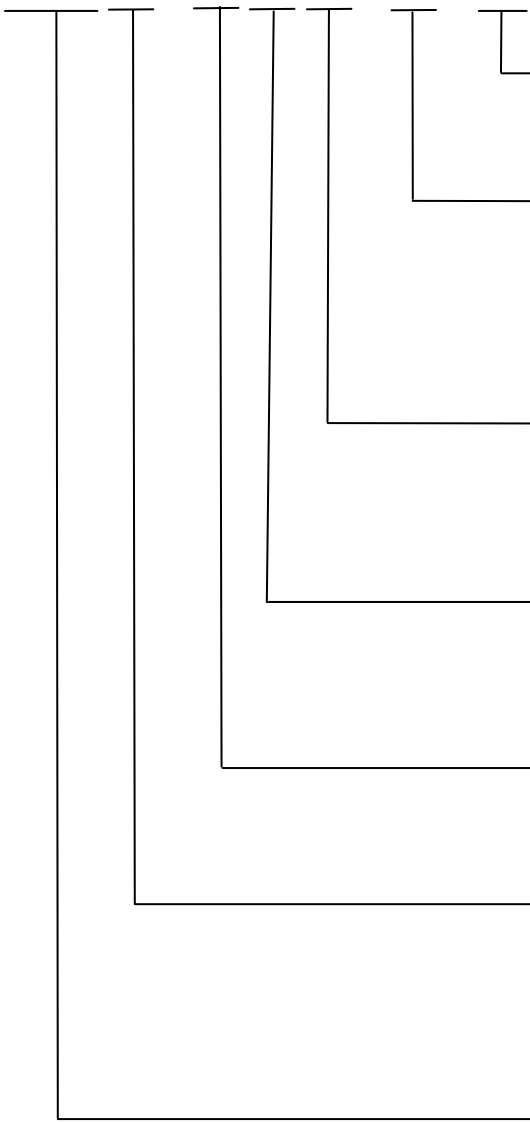
PART NO.	COLOR OF STEM	OPERATING FORCE
1188P-1K2	BLACK	160±50gf
1188P-1W3	WHITE	260±50gf



P.C.B. LAOUT

HOW TO ORDER

1188



Package Style:
T/R = Tape & Reel

Solder:
V=Lead Free Solderable

Operating Force
2 = 160gf
3 = 260gf

Color of Stem:
K= Black
W = White

Stem Height:
1 = 1.0mm

Pilot:
= Without Pilot
E = Base with Pilot
P = Cover with Pilot
EP= Base + Cover with Pilot
Extra Thin Side actuated Tact Switch

SPECIFICATION

MECHANICAL

Operation Force: 2=160 ± 50gf
3=260gf ± 50gf

Stroke: 0.25 +0.10 / - 0.1 mm

Operation Temperature: -25 to +70

Storage Temperature: -40 to +80

ELECTRICAL

Electrical Life: 50,000 cycles for 160gf
30,000 cycles for 260gf

Rating: 50mA , 12VDC

Contact Resistance: 100mΩ max.

Insulation Resistance: 100MΩ min. at 500VDC

Dielectric Strength: 250 V AC/ minute

Contact Arrangement: 1 pole 1 throw

MATERIALS

COVER Steel : Tin plated(Standard)
Silver plated(V-option)

BASE: UL94V-0 Nylon Thermoplastic

Color: White

STEM: UL94V-0 Nylon Thermoplastic

Color: Black (160gf), White (260gf)

CONTACT DISC: Stainless with silver cladding

TERMINAL: Brass with silver plated

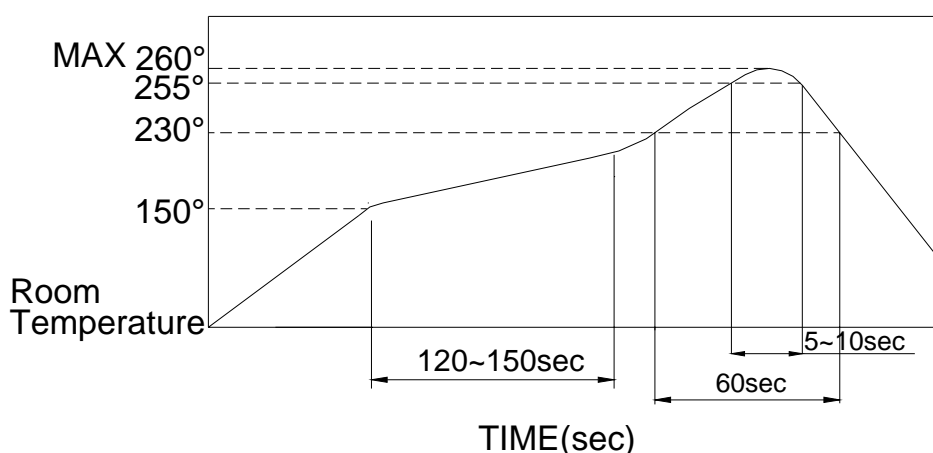
SOLDERING PROCESS

For best results, please follow these recommendation:

HAND SOLDERING: Use a soldering iron of 30 watts, controlled at 350 approximately max 5 seconds.

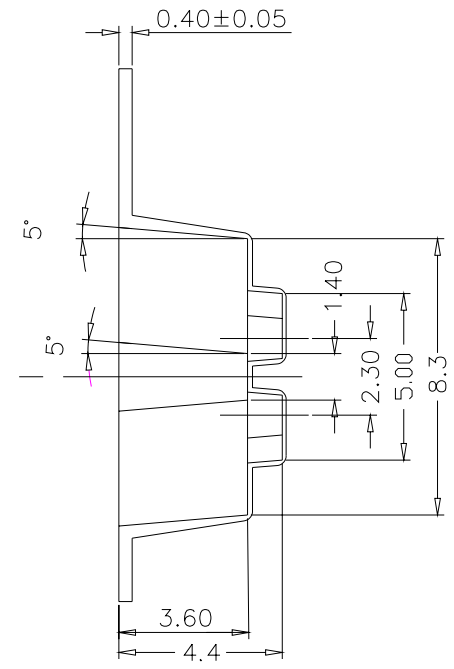
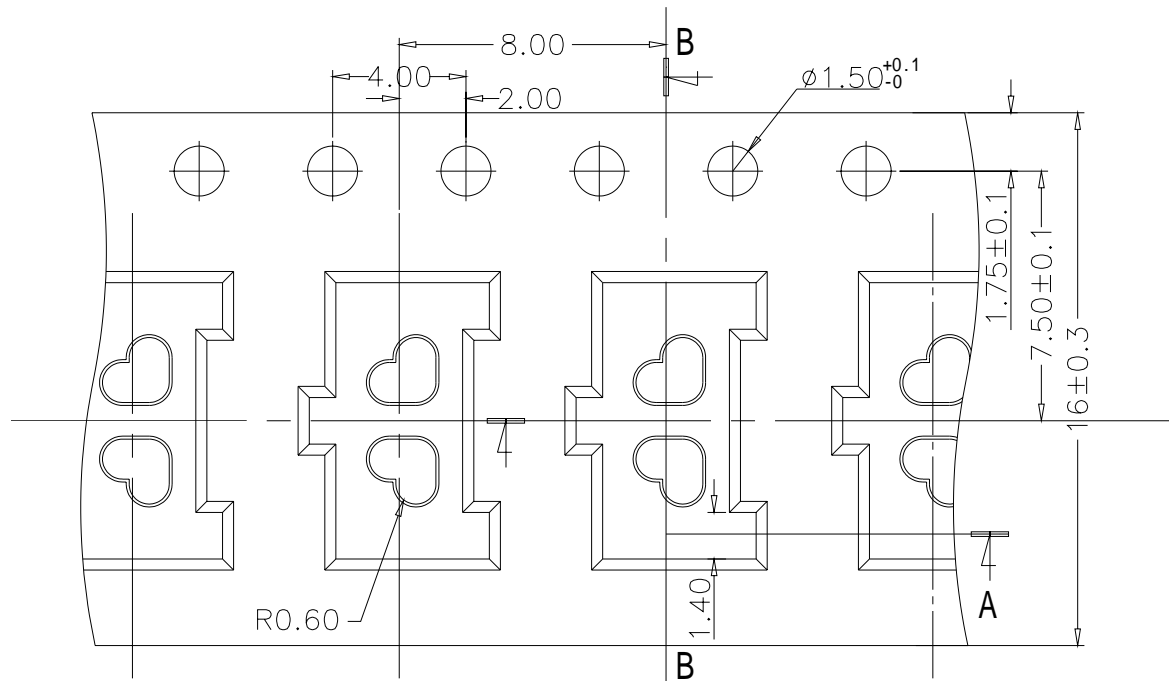
REFLOW SOLDERING: When applying reflow soldering, the peak temperature or the reflow Oven should be set at 260 max.

Reflow Temperature Profile:

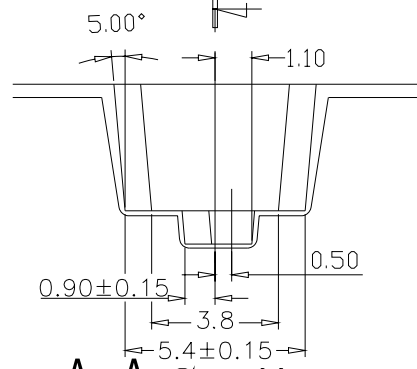


PACKING

Part Number	Number Per Reel
1188-1	2000
1188E-1	
1188EP-1	
1188P-1	



B-B Section



A-A Section