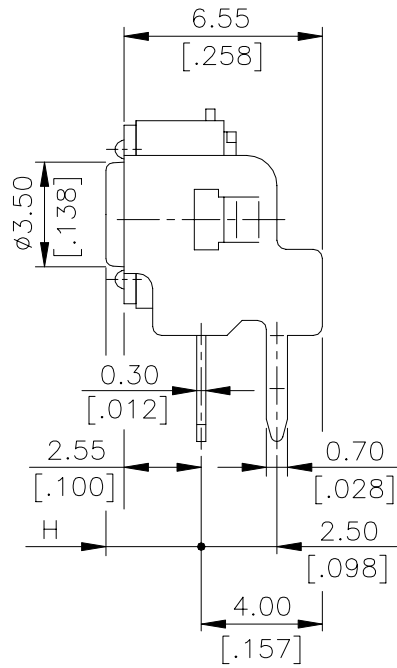
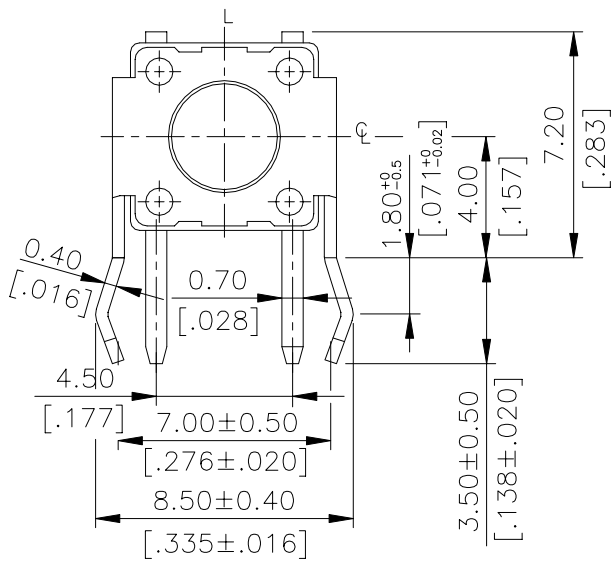
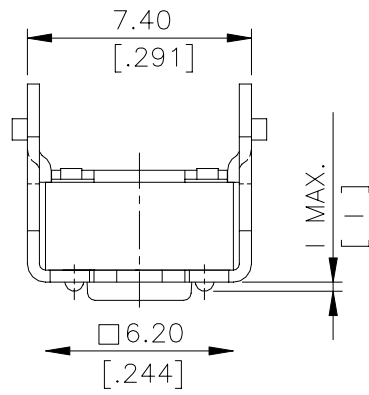


DTSA-6,DTSG-6(2) SERIES

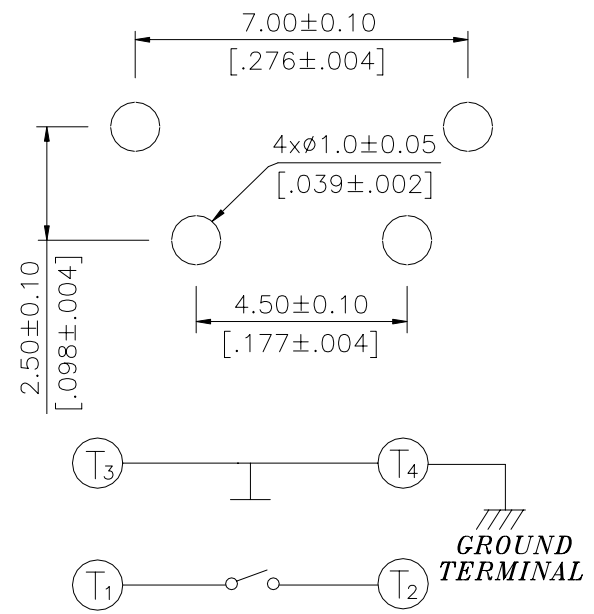
DIMENSIONS

DTSA-6

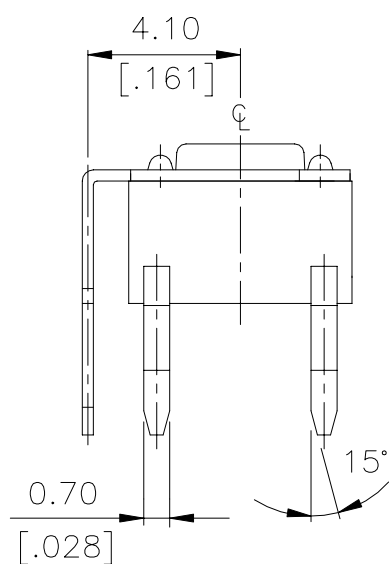
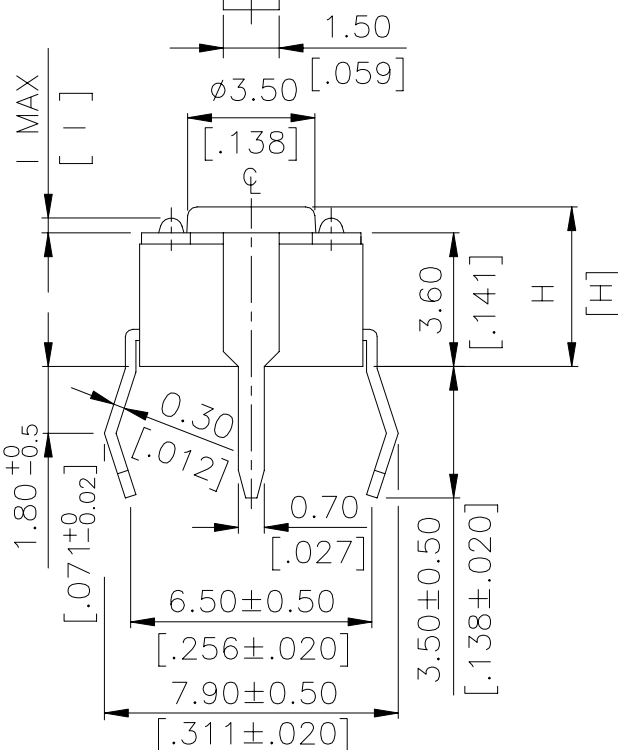
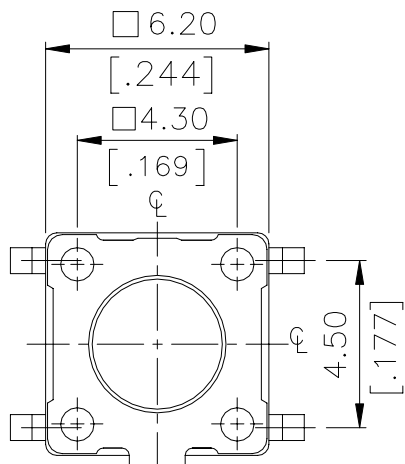


DTSA-62~66 □	0.4 MAX	.016 MAX
DTSA-6 1 □	0.3 MAX	.012 MAX
PROD.	NO.	I
		INCHES.

DTSA-6 6 □	11.85 [.467]
DTSA-6 5 □	8.35 [.329]
DTSA-6 3 □	5.85 [.230]
DTSA-6 2 □	3.85 [.152]
DTSA-6 1 □	3.15 [.124]
PROD.	NO.
	H

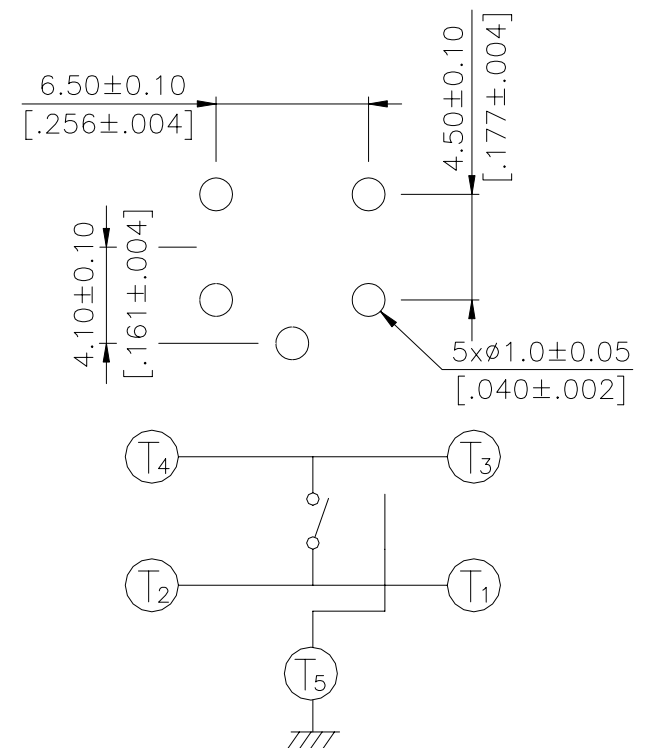


DTSG-6

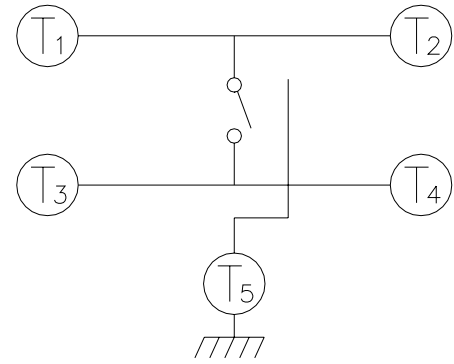
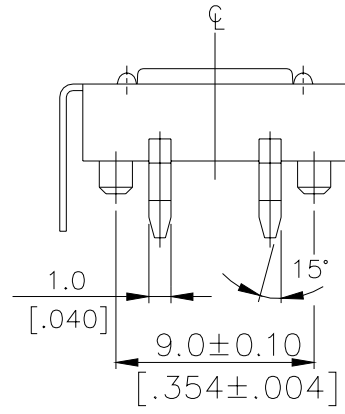
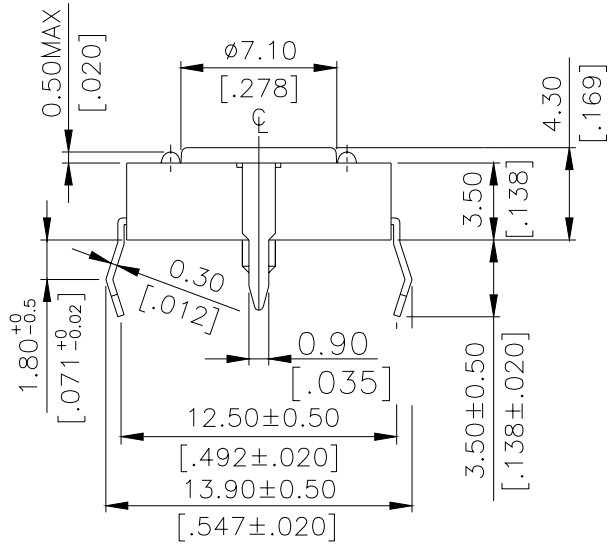
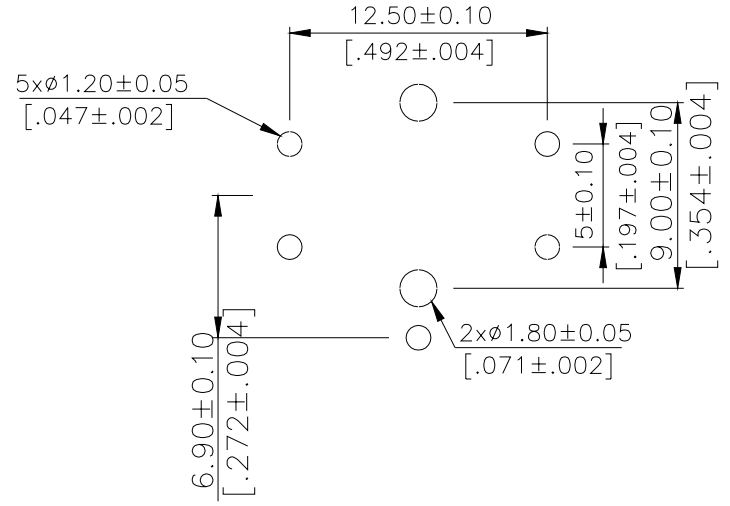
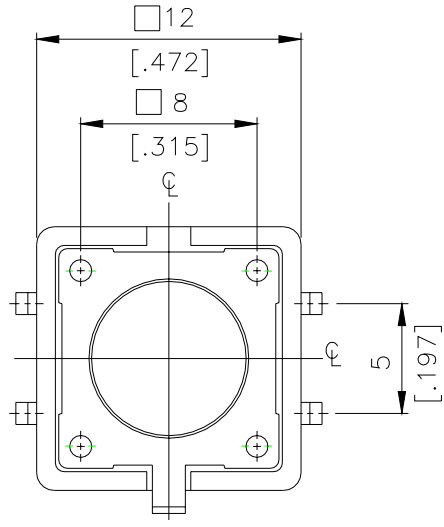


DTSG-62~66 □	0.5 MAX	.0196 MAX
DTSG-6 1 □	0.4 MAX	.016 MAX
PROD.	NO.	I
		INCHES.

DTSG-6 6 □	13.0 [.512]
DTSG-6 5 □	9.5 [.374]
DTSG-6 4/8 □	7.3(SQ) [.287]
DTSG-6 3 □	7.0 [.275]
DTSG-6 2 □	5.0 [.197]
DTSG-6 1 □	4.3 [.169]
PROD.	NO.
	H



DTSG(P)-2



HOW TO ORDER

DTS - - - ()

- (165) =Cover Terminal W/O Ben dng
- (923) =Cover=General Type
- (046) =Total H : 7.0mm

Soldering
V=Lead Free

Cover of Stem For Operatin Force:
K = Black, 100gf
N = Brown, 160gf
R = Red, 260gf
S = Salmon, 320gf
Y = Yellow, 520gf
< 12x12, K,Y Unavailable >

Dimension H:

Code	DTSA-6	DTSG-6	DTSG(P)-2
(SQ.)x2.4mm	1 = 3.15mm	4.3mm	4.3mm
(SQ.)X2.8mm	2 = 3.85mm	5.0mm	CODE(4)
	3 = 5.85mm	7.0mm	(SQ.)X3.8mm
	44 = 6.15mm	7.3mm	7.3mm
	48 = 6.15mm	9.5mm	
	5 = 8.35mm	13.0mm	
	6 = 11.85mm		

Prod. Size:
6 = 6 x 6 mm
2 = 12 x 12 mm

= None Post
P = With Post (For 12x12mm only)

DTSA = Right Angle Type Tactile Switch
DTSG = With Ground Terminal Type Tactile Switch

