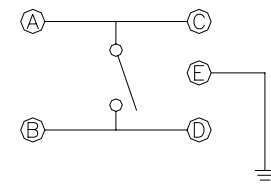
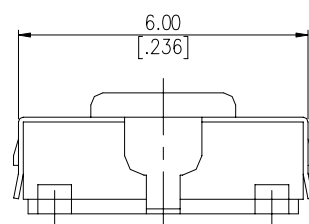
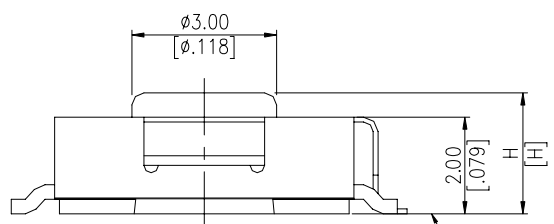
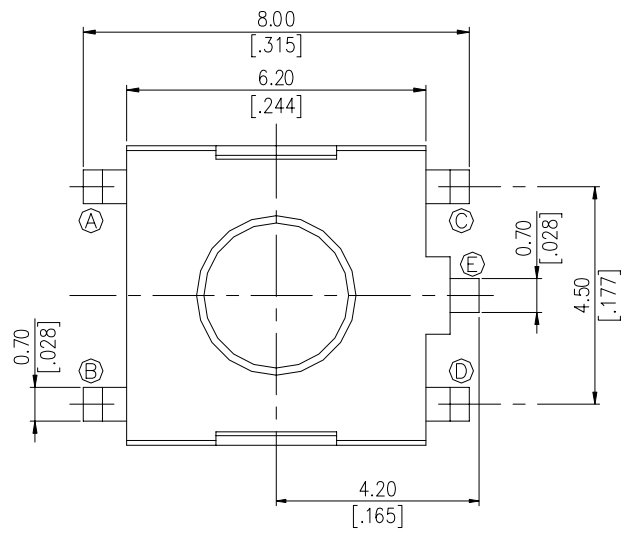


# DTS(G)ZM(P).DTSYH-6 SERIES

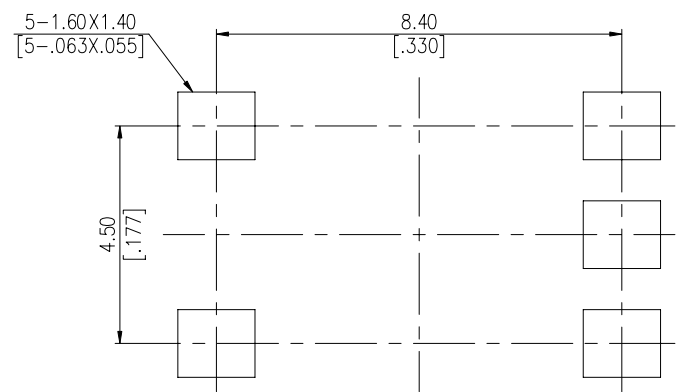


## DIMENSIONS

### DTSGZM-6



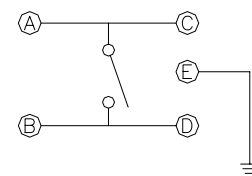
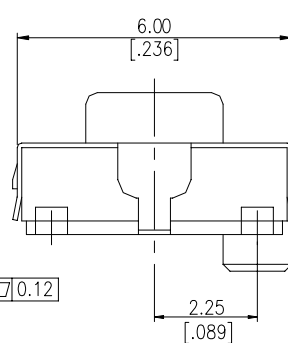
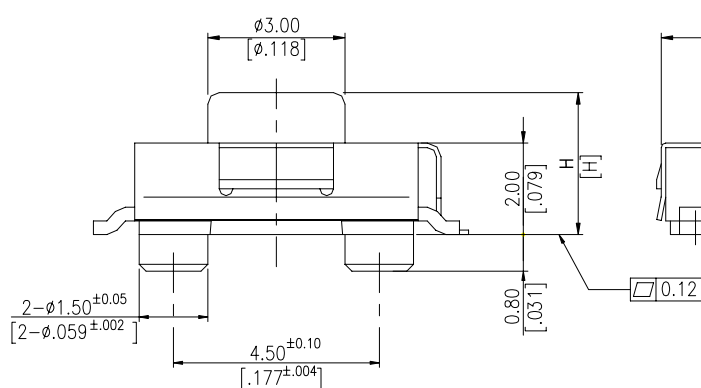
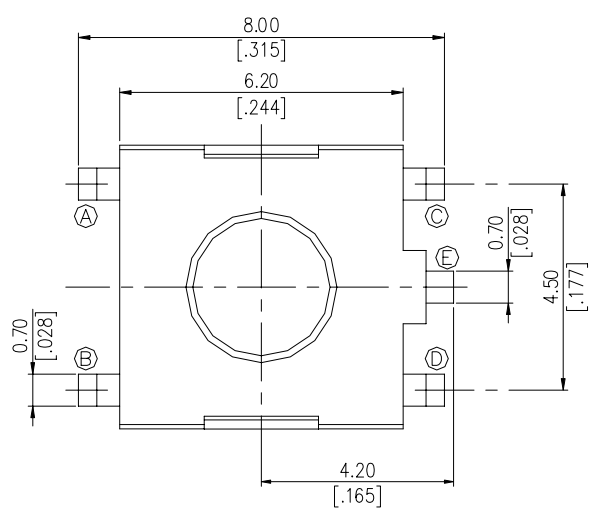
CIRCUIT DIAGRAM



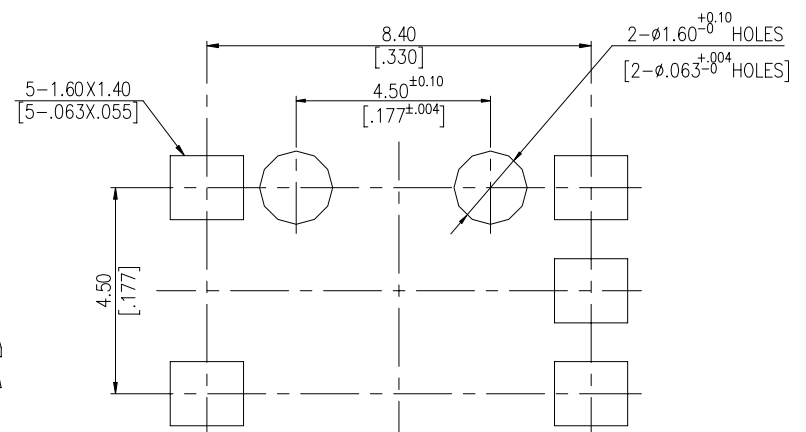
P.C.B. LAYOUT

DTSGZM-62	3.1mm [.122]
DTSGZM-61	2.5mm [.098]
PART NO.	H

### DTSGZMP-6



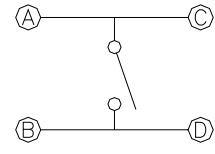
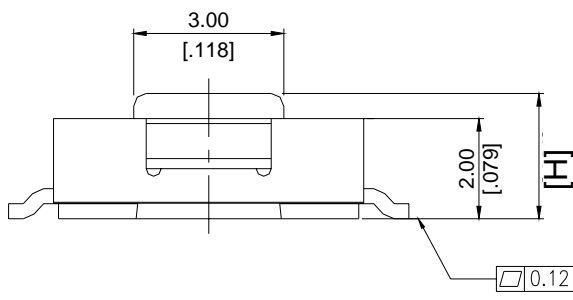
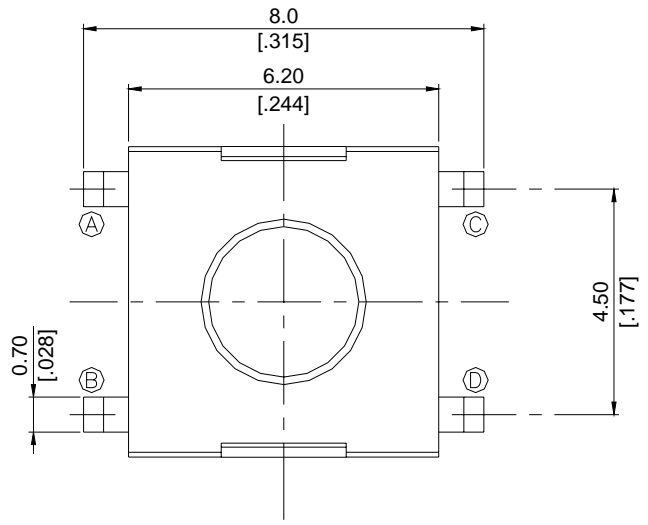
CIRCUIT DIAGRAM



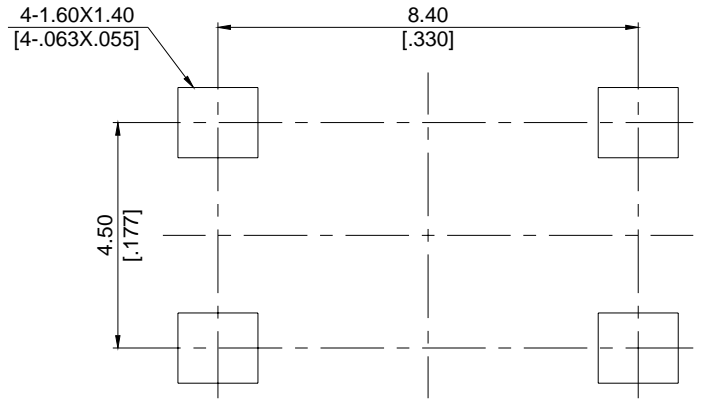
P.C.B. LAYOUT

DTSGZMP-62	3.1 [.122]
DTSGZMP-61	2.5 [.098]
PART NO.	H

**DTSZM-6**



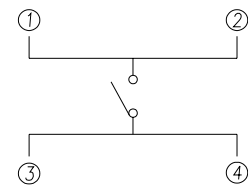
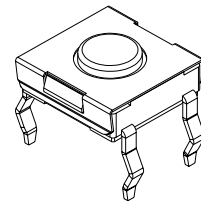
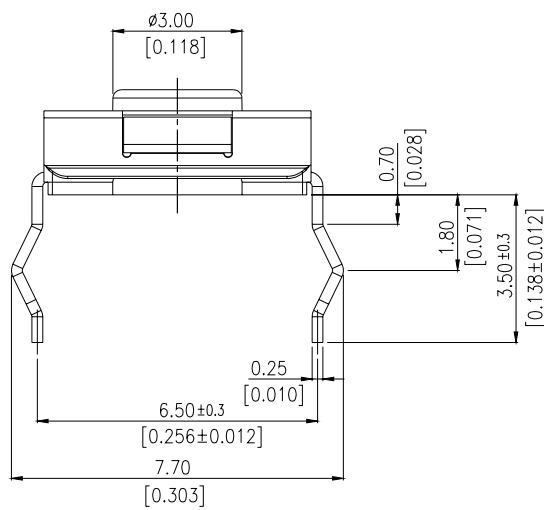
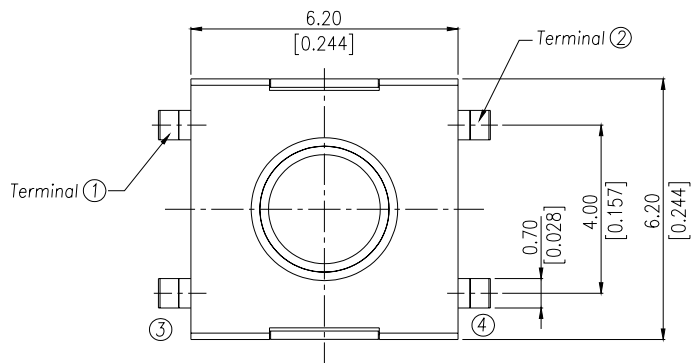
**CIRCUIT DIAGRAM**



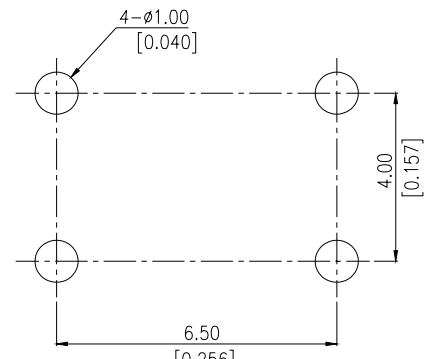
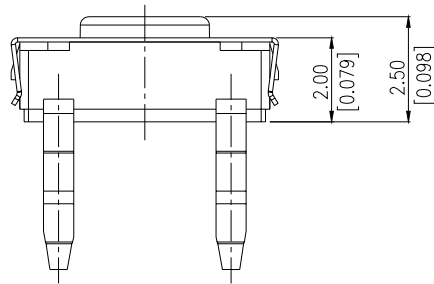
**P.C.B. LAYOUT**

DTSZM-62	3.1mm[.122]
DTSZM-61	2.5mm[.098]
PART NO.	H

**DTSYH-6**



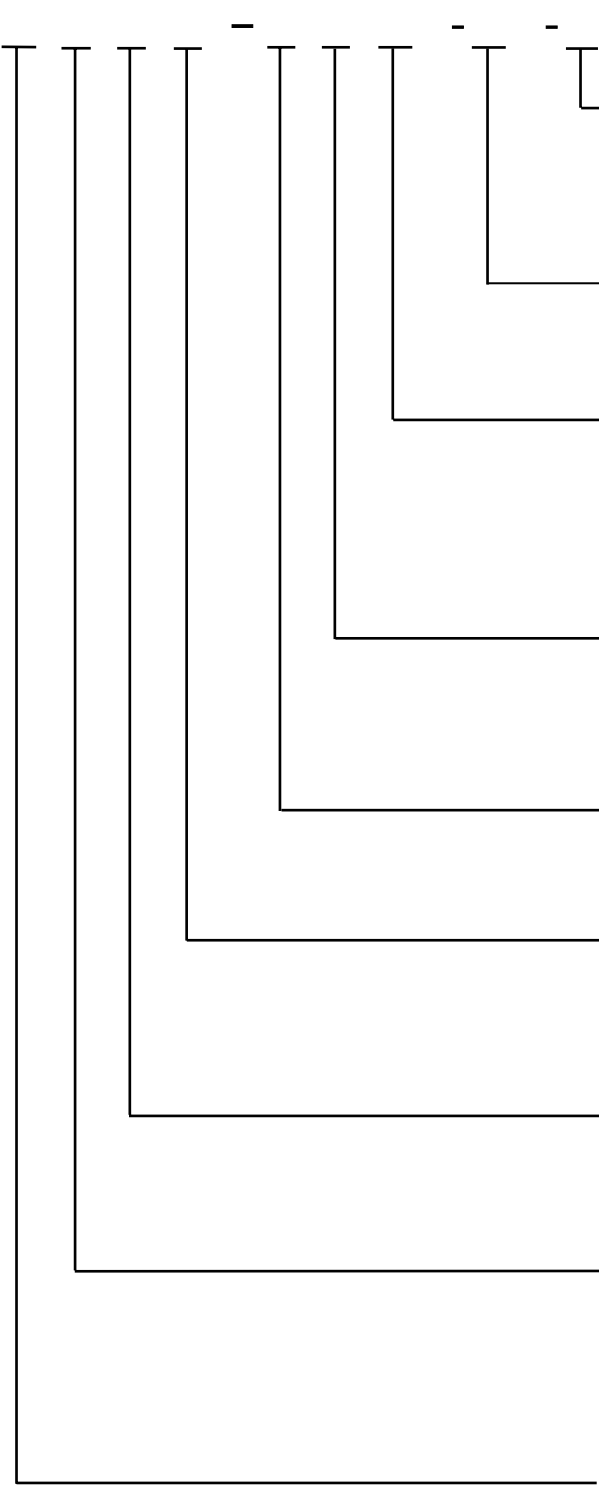
**CIRCUIT**



**P.C.B. LAYOUT**

## HOW TO ORDER

DTS



### Package Style:

B = Tube

T/R = Tape & Reel

### Soldering:

V = Lead Free solderable

### Color of Stem for Operation Force:

K = Black, 100gf ( DTSYH-61 )

N = Brown, 160gf

R = Red, 260gf

### Height:

1 = 2.5mm

2 = 3.1mm

### Prod size

6 = 6X6mm

### Alignment Pin

= Without Post

P = With Post (S.M.T Only)

### Terminal Type

M = S.M.T

H = Through Hole Terminal

### Terminal Pitch

Y = Terminal Pitch 4.0mm

( Through Hole Only )

Z = Terminal Pitch 4.5mm

### Product Series:

G = With Ground Terminal

( DTSGZM-6 Only )

= Without Ground Terminal

## SPECIFICATION

### MECHANICAL

Operation Force: 100±50gf Black(K)

160±50gf Brown(N)

260±50gf Red(R)

Stroke: 0.25+0.2/-0.1mm

Operation Temperature: -25 to +70

Storage Temperature: -30 to +80

### ELECTRICAL

Electrical Life: 100,000 cycles for 260gf

200,000 cycles for 100gf,160gf

Rating : 50 mA , 12 VDC

Contact Resistance : 100mΩ max

Insulation Resistance : 100MΩ min , at 500 VDC

Dielectric Strength : 250 VAC / minute

Contact Arrangement : 1 pole 1 throw

## MATERIALS

COVER: Stainless steel ( DTSYH-6,DTSZM-6 )

Nickel Silver ( DTSGZM-6 )

BASE: UL 94V-0 Nylon High-temp thermoplastic

Color: Black

CONTACT DISC: Stainless steel with silver cladding

TERMINAL: Brass with silver plated

STEM : UL94V-0 Nylon High-temp Thermoplastic

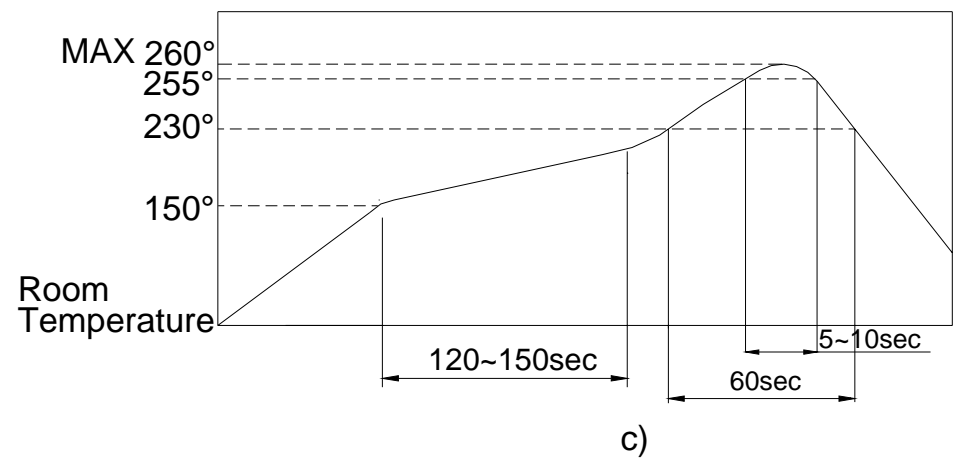
Color : Black(100gf) , Brown(160gf) , Red(260gf) ,

# SOLDERING PROCESS

**HAND SOLDERING :** Use a soldering iron of 30 watts, controlled at 350 approximately max 5 seconds while applying.

**REFLOW SOLDERING:** When applying reflow soldering, the peak temperature or the reflow oven should be set to 260 max.

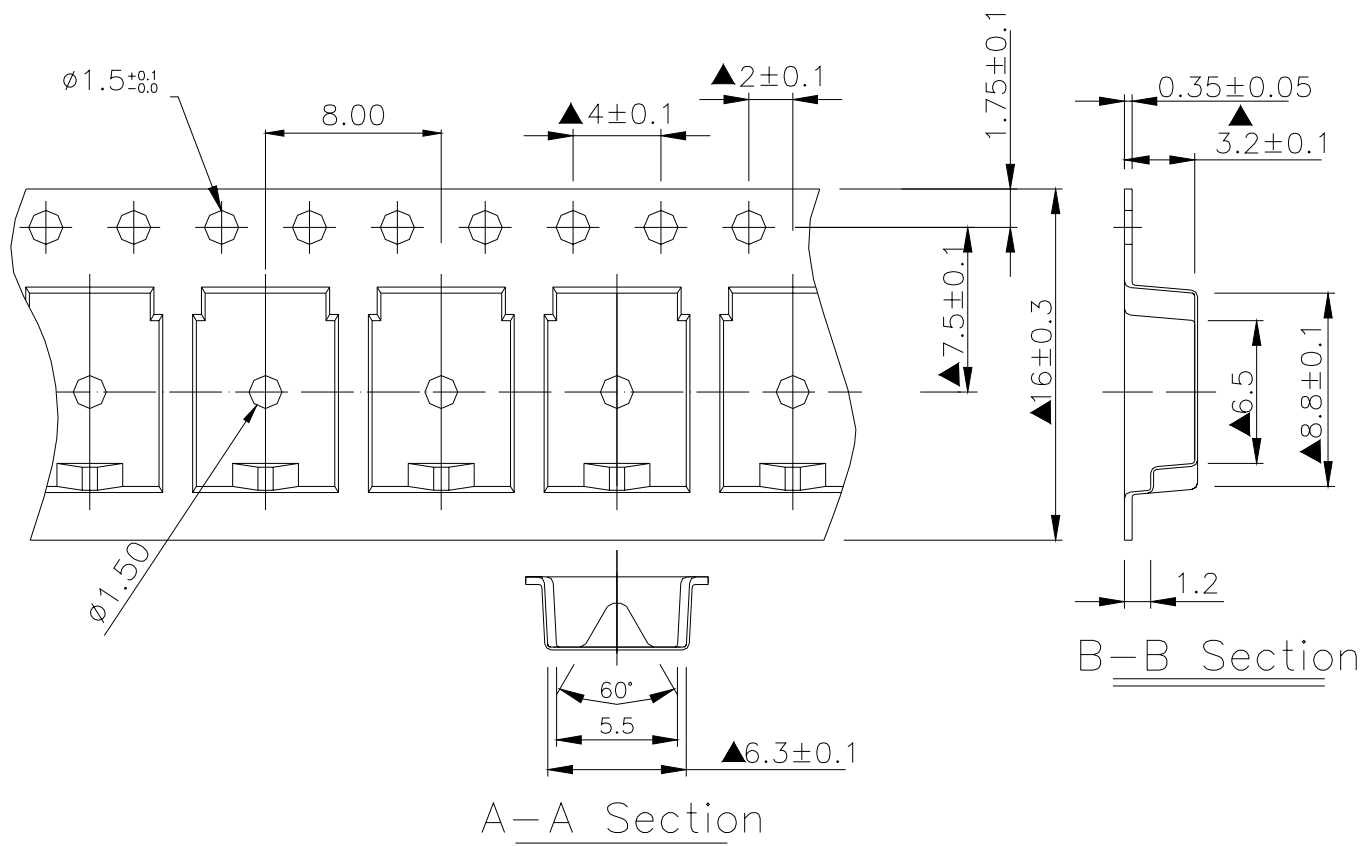
**Reflow Temperature Profile:**



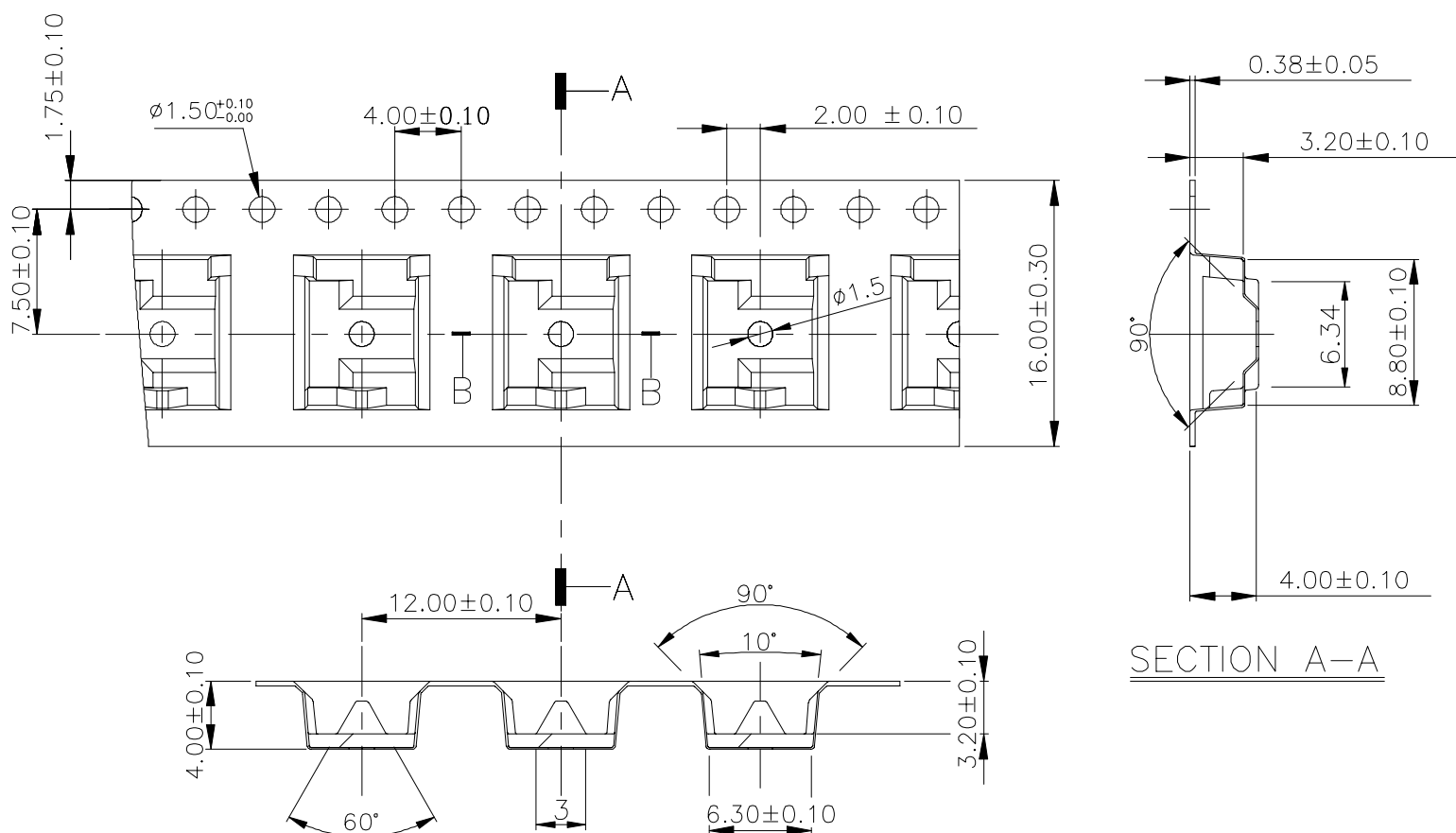
## PACKING

Part Number	Number Per Tube	Number Per Reel
DTS(G)ZM-61	75	2500
DTS(G)ZM-62	75	2500
DTSGZMP-61	-	1400
DTSGZMP-62	-	1400
DTSYH-61	75	-

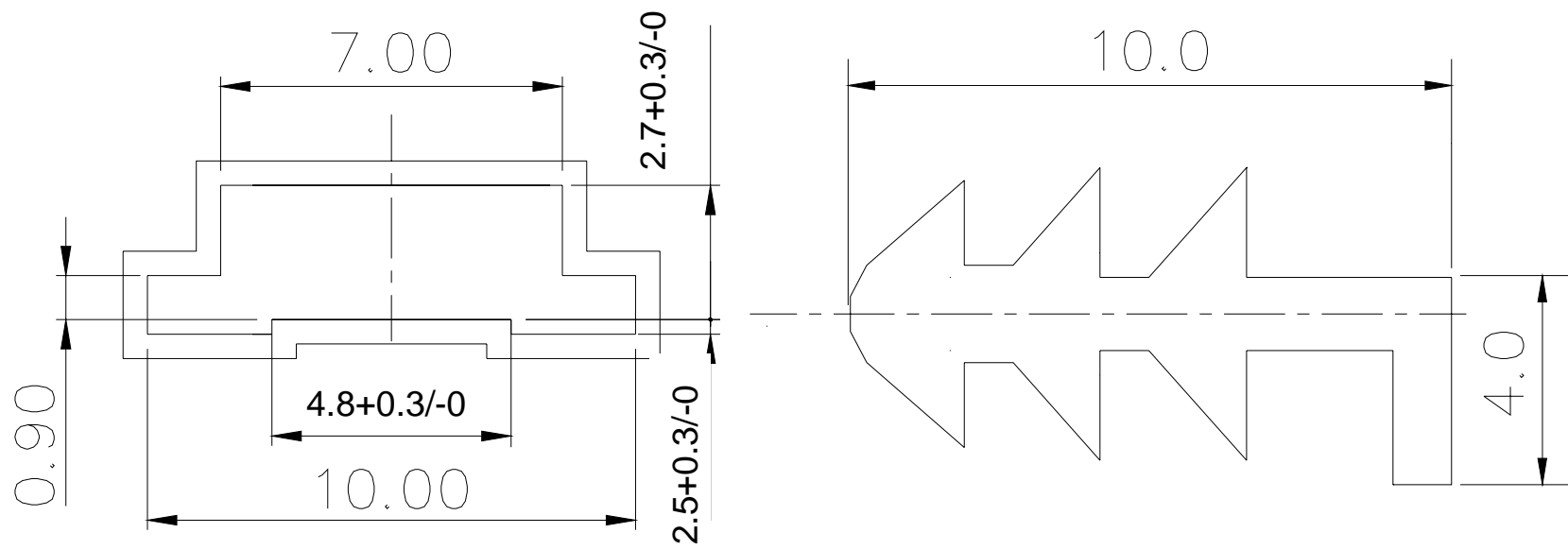
### DTSGZM-6 Reel



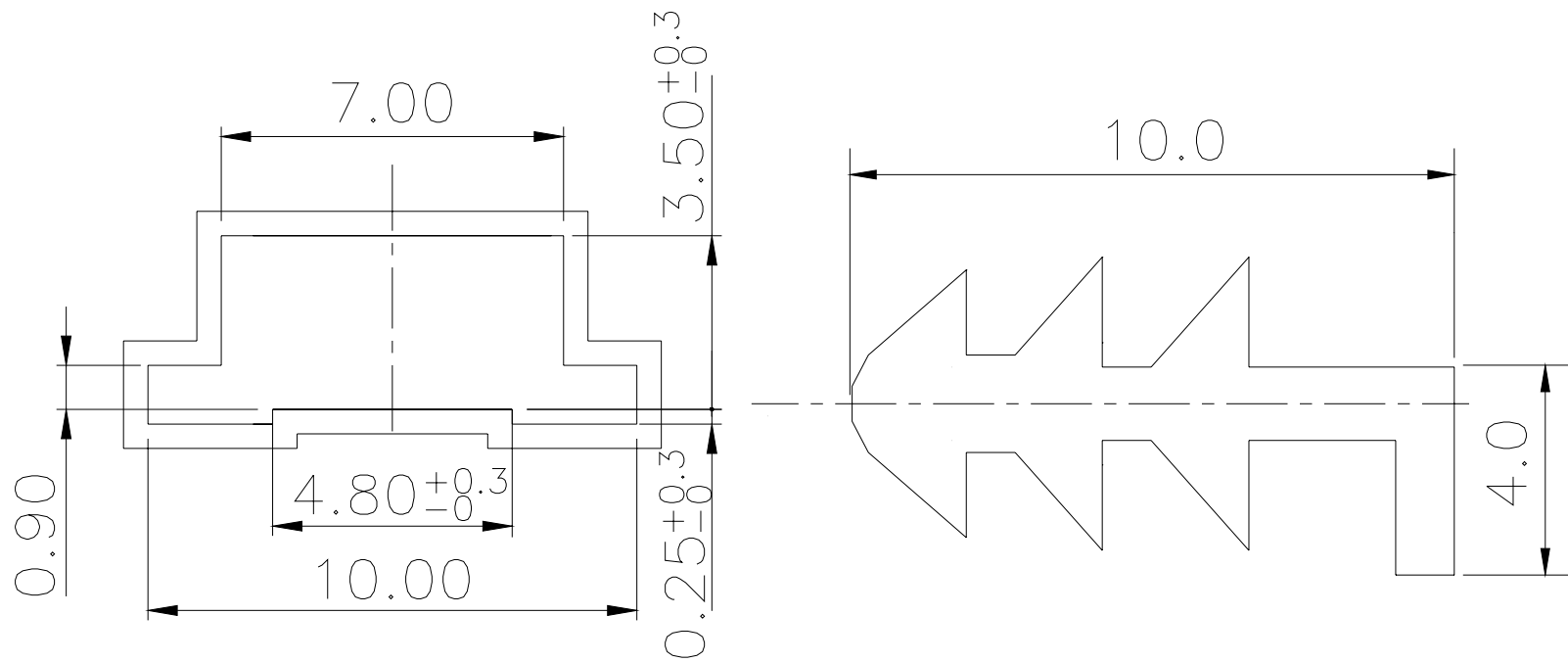
### DTSGZMP-6 Reel



DTSGZM-61 TUBE



DTS(G)ZM-62 TUBE



A P E M

**Apem Components Ltd**  
Drakes Drive, Long Crendon  
Buckinghamshire  
HP18 9BA, U.K

Tel +44 (0)1844 202400

Fax +44 (0)1844 202500