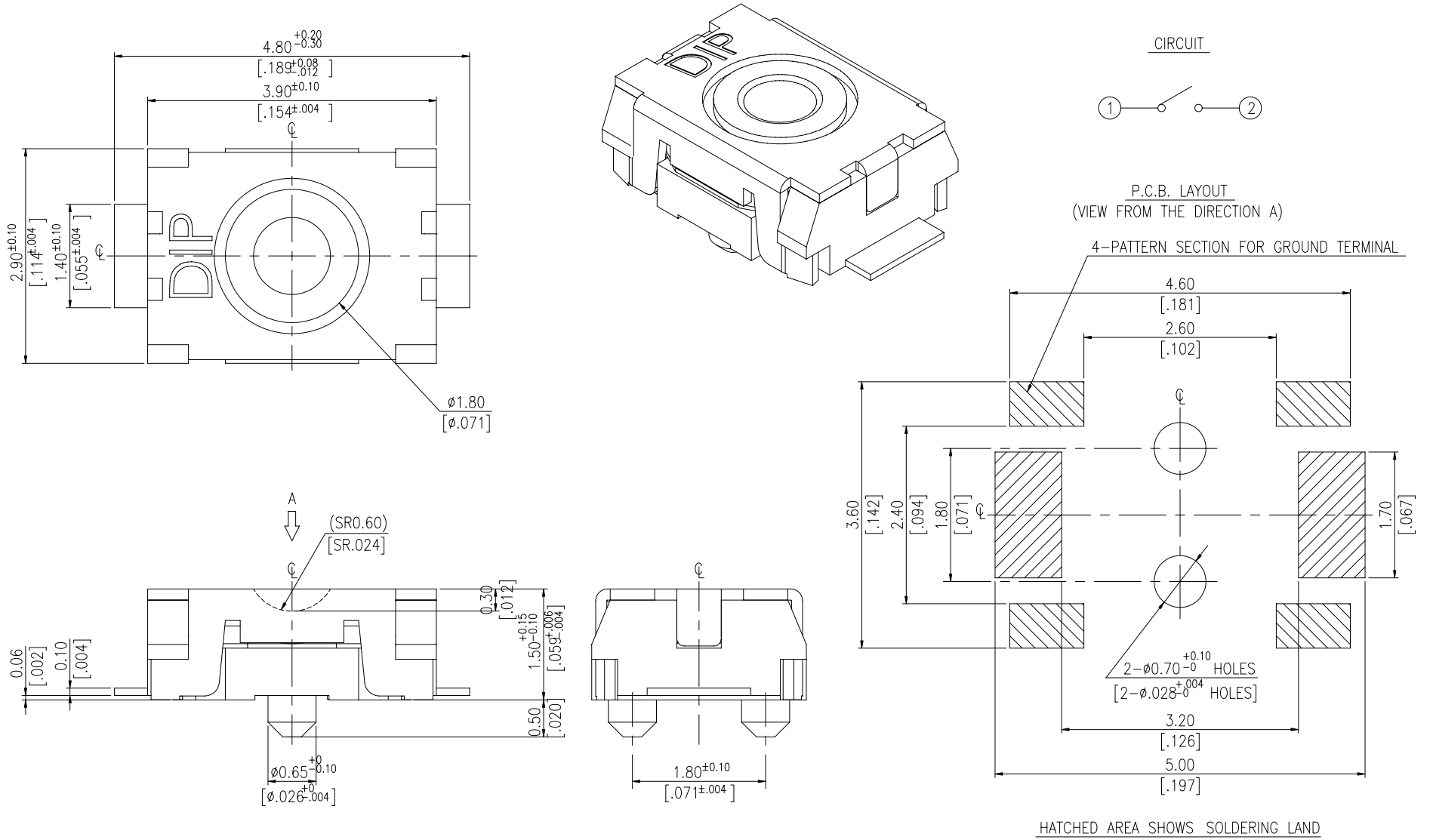
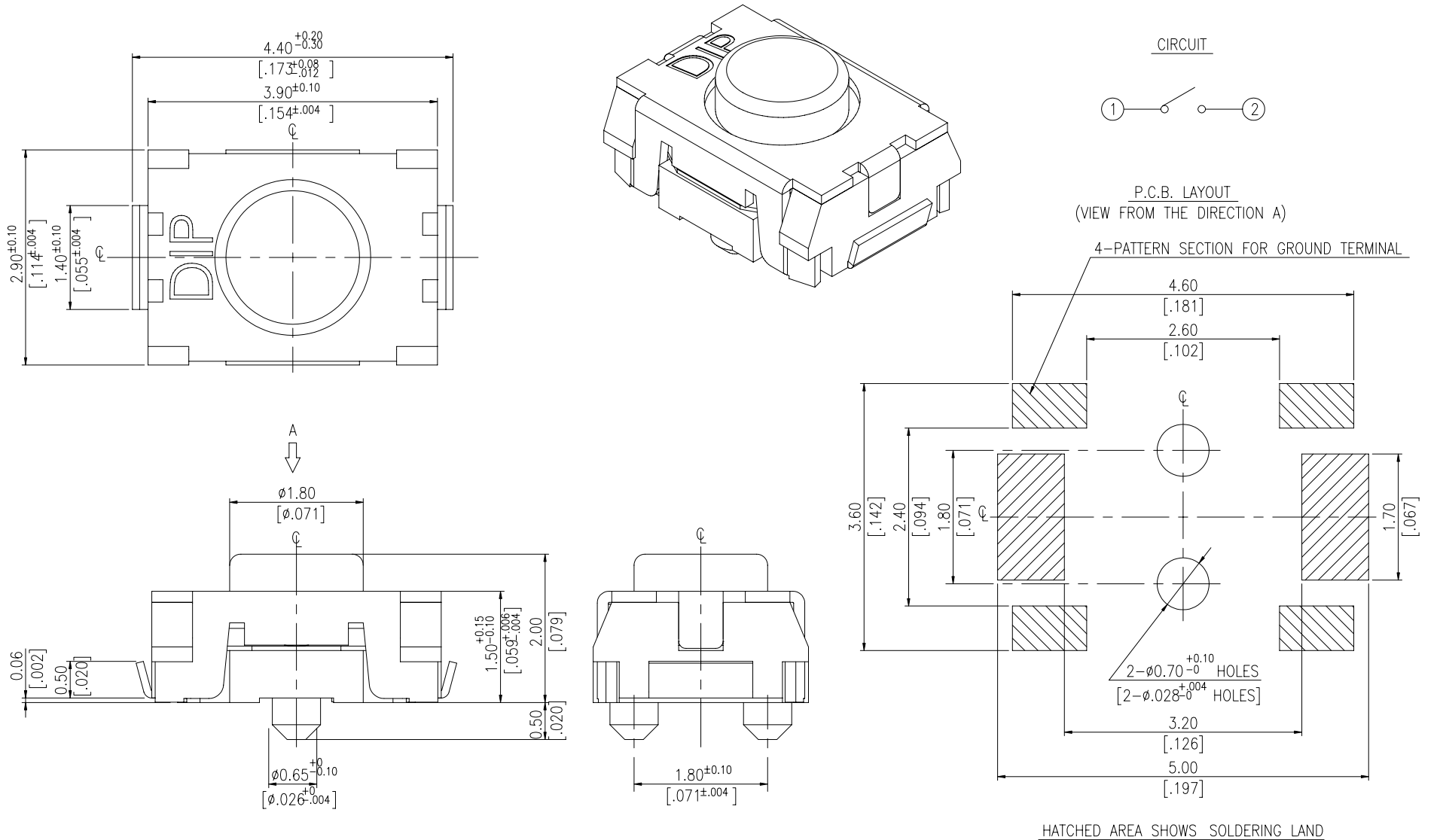


DIMENSIONS

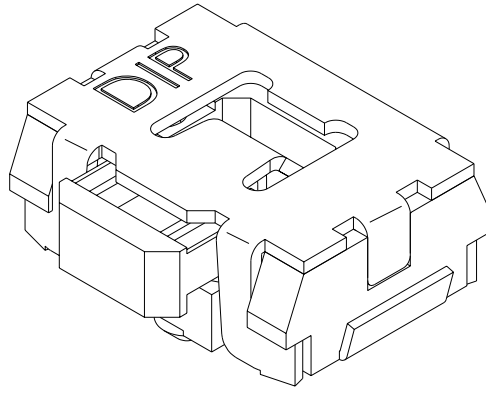
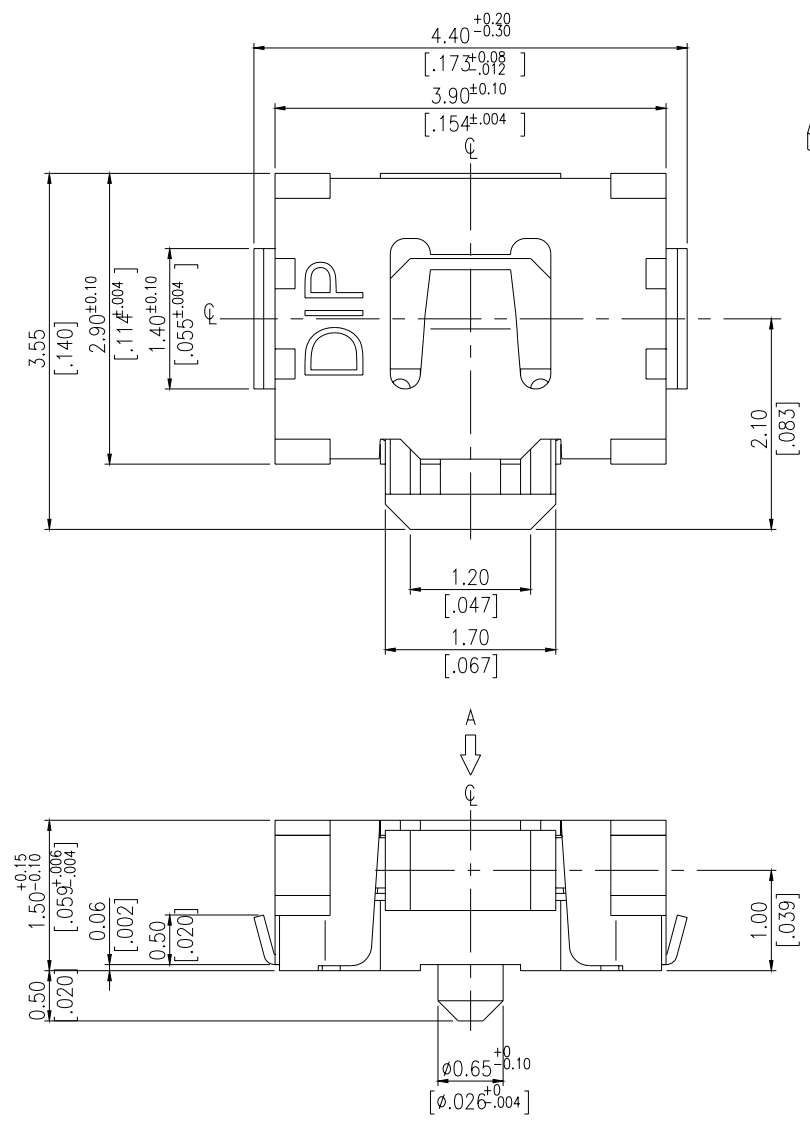
MPTCFGP1



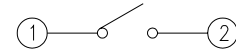
MPTCLGP2



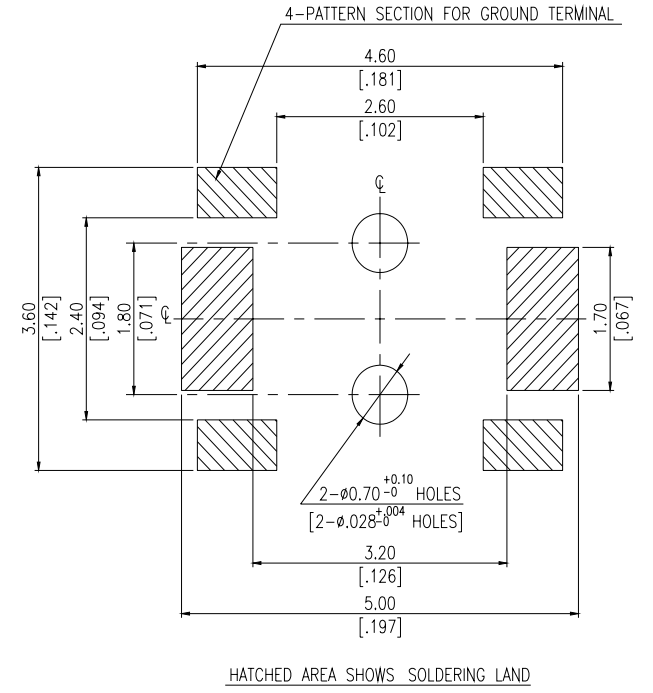
MPTCLG



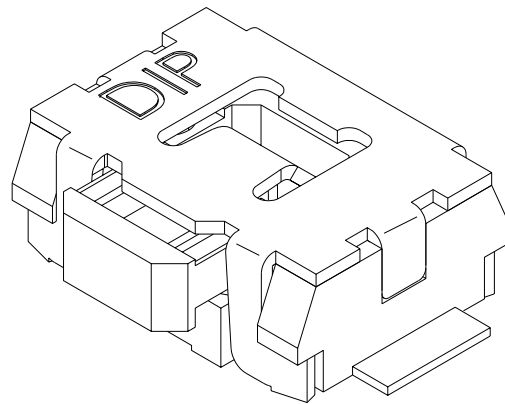
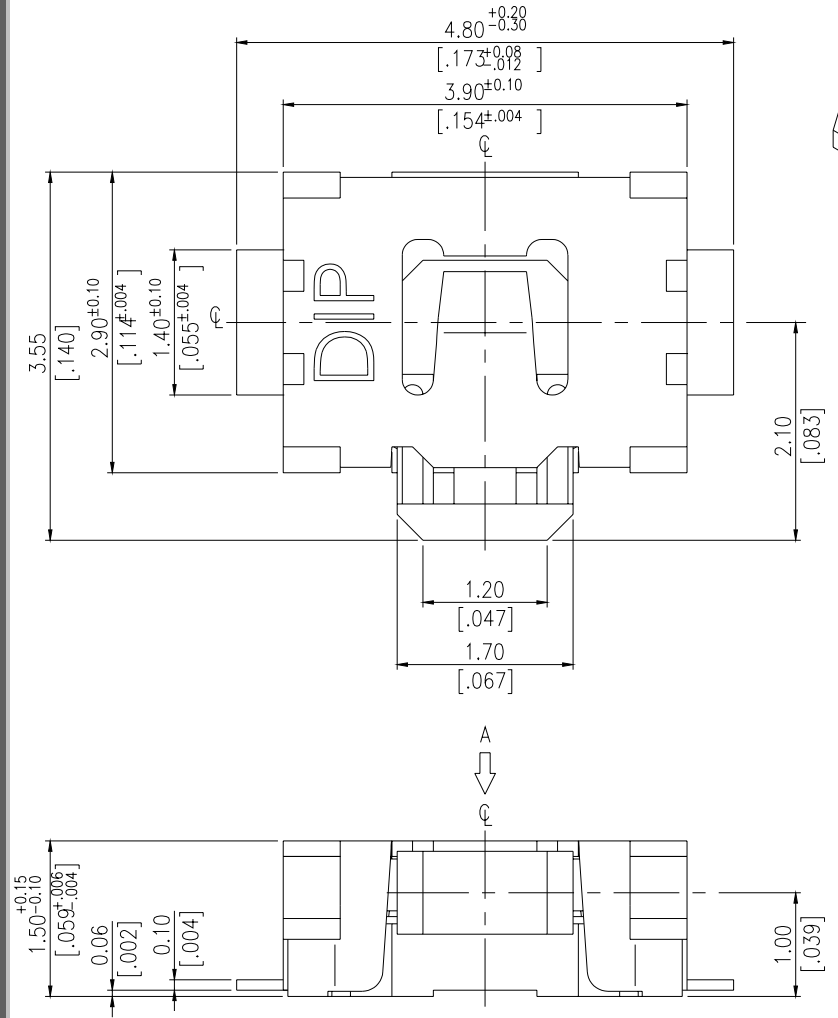
CIRCUIT



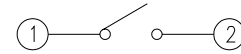
P.C.B. LAYOUT
(VIEW FROM THE DIRECTION A)



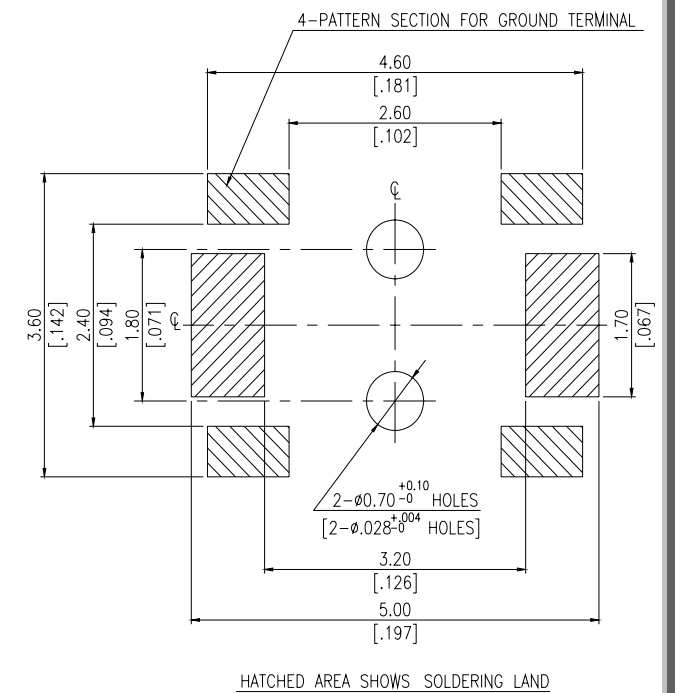
MPTCFG



CIRCUIT

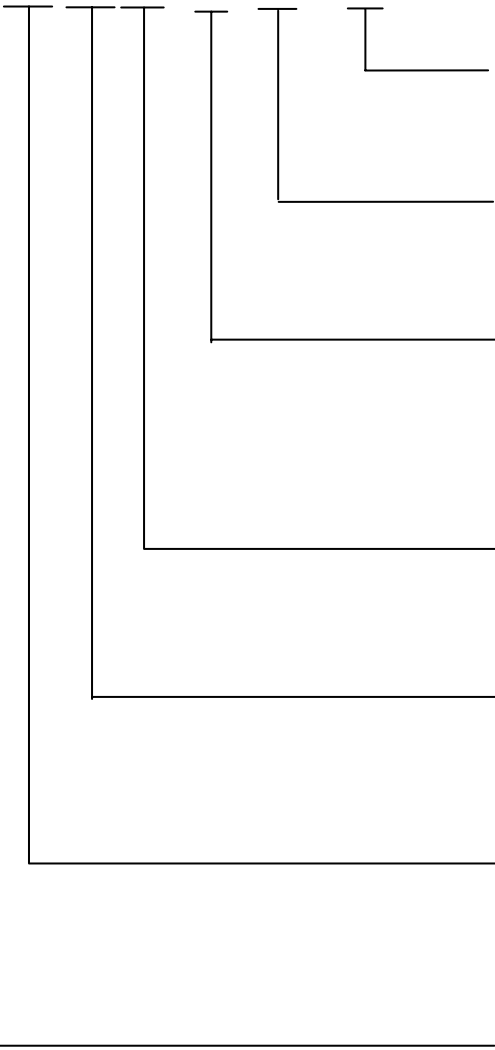


P.C.B. LAYOUT
(VIEW FROM THE DIRECTION A)



HOW TO ORDER

MPT



Package Style:
T/R=Tape & Reel

Soldering:
V=Lead Free Solderable

Stem Height for Vertical Push Type
=side stem
P1=1.5mm
P2=2.0mm

G=Ground Terminal
=Without Ground Terminal

Terminal Type:
F=With Flat Terminal
L= With Bending Terminal

Pilot:
= Without Pilot
C = With Pilot

Miniature side/ Vertical Push Switch

SPECIFICATION

MECHANICAL

Operation Force: 160 ± 50gf Vertical Push
220 ± 65gf Side push

Stroke: 0.2 +0.10 / - 0.05 mm side push
0.13 +0.10/-0.05 mm Vertical push

Operation Temperature: -25 to + 70

Storage Temperature: -30 to +80

ELECTRICAL

Electrical Life: 100,000 cycles (Side push)

Electrical Life: 200,000 cycles (Vertical push)

Rating:50mA , 12VDC

Contact Resistance: 100mΩ max.

Insulation Resistance: 100MΩ min. at 100VDC

Dielectric Strength: 100VAC/1 minute

Contact Arrangement: 1 pole 1 throw

MATERIALS

COVER: Stainless steel

BASE: LCP High-temp thermoplastic

Color: White

STEM: LCP High-temp thermoplastic

Color: Black

CONTACT DISC: Stainless with silver cladding

TERMINAL: Brass with silver plated

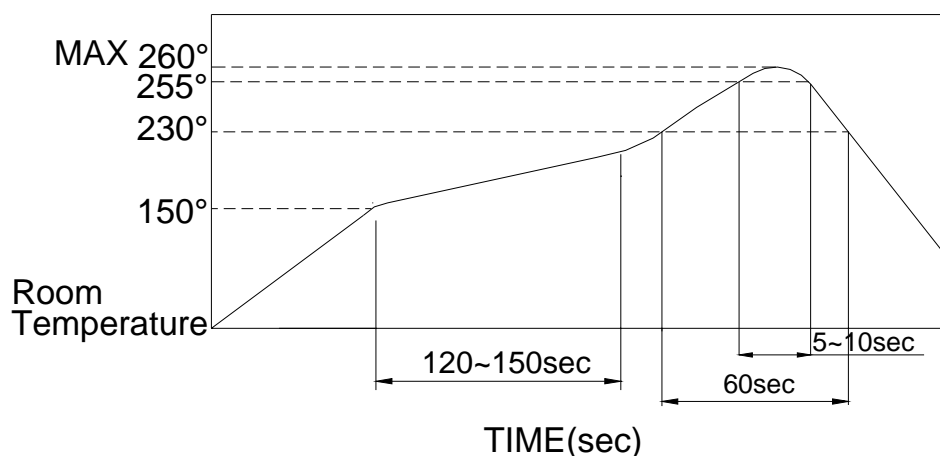
TAPE: Teflon

SOLDERING PROCESS

HAND SOLDERING : Use a soldering iron of 30 watts, controlled at 350 approximately max 5 seconds while applying.

REFLOW SOLDERING: When applying reflow soldering, the peak temperature or the reflow oven should be set to 260 max.

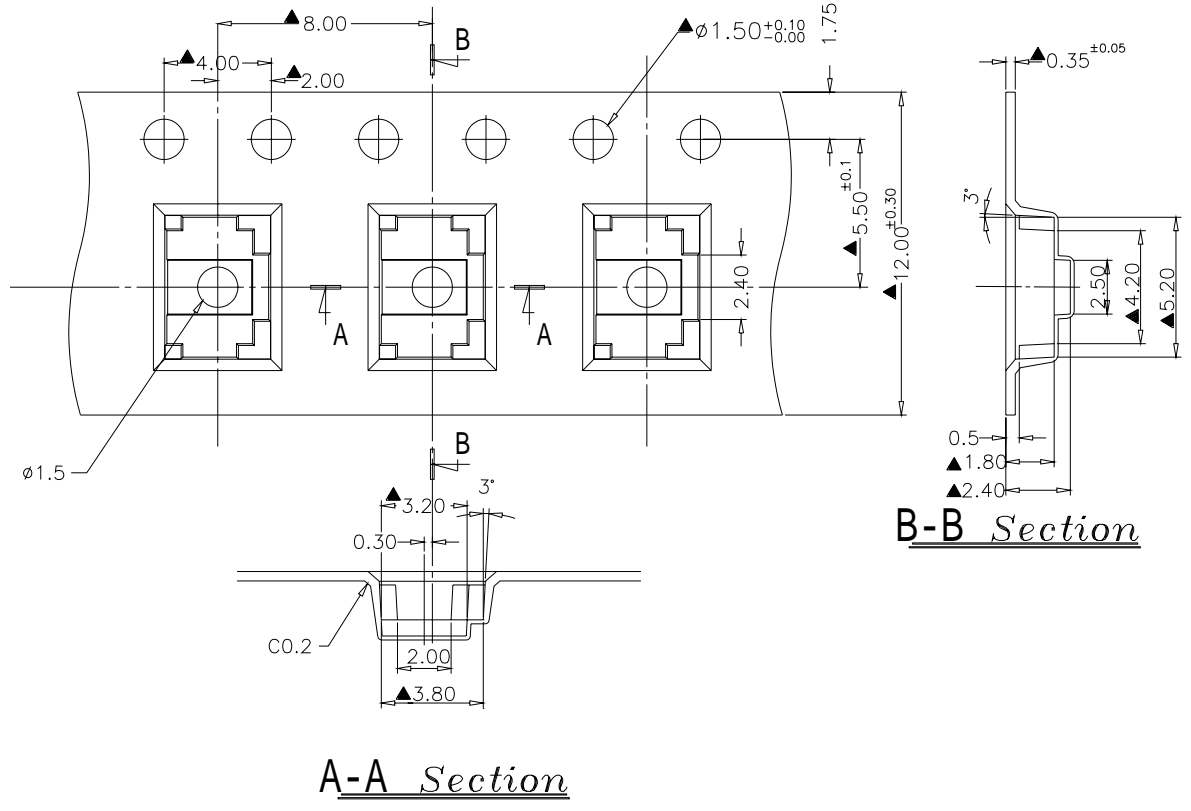
Reflow Temperature Profile:



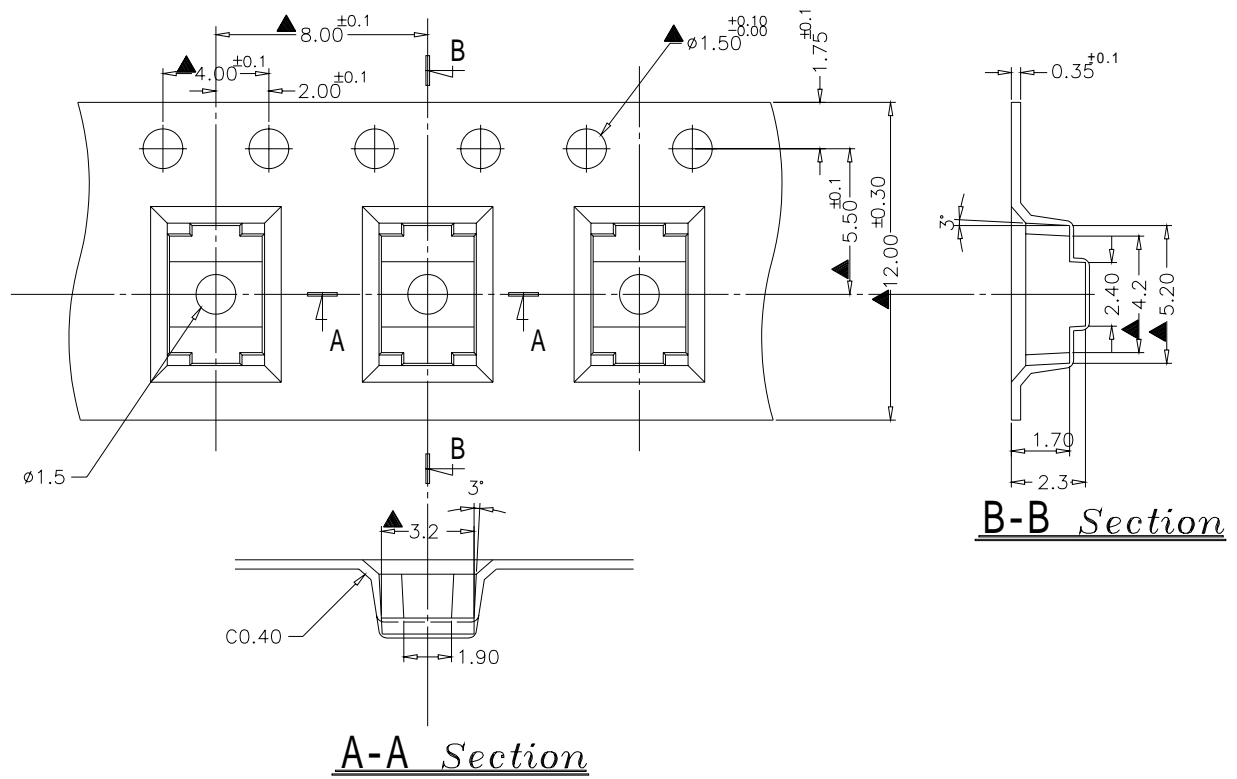
PACKING

Part Number	Number Per Reel
MPT FG	3500
MPT LG	3500
MPT F P1	2000
MPT L P2	2000

MPT Reel



MPT F P1 Reel



MPT P P2 Reel

