

**APEM**<sup>®</sup>

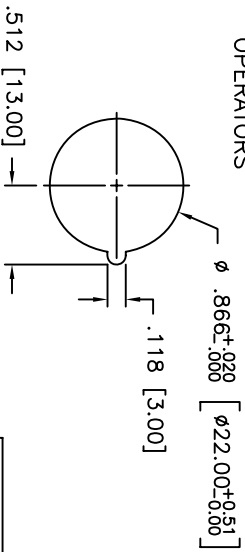
**APEM COMPONENTS, INC.**  
 U.S.A. (781)-246-1007  
 FAX: (781)-245-4531  
 E-MAIL: INFO@APEM.COM

**A02 SERIES  
 ASSEMBLY  
 INSTRUCTIONS  
 FOR ROUND AND  
 SQUARE BEZELS**

**STEP 1**

DRILL OR PUNCH HOLE INTO PANEL USING ONE OF THE SIZES BELOW.  
 PANEL THICKNESS: .236 [6.00] MAX.

ROUND & SQUARE  
 OPERATORS



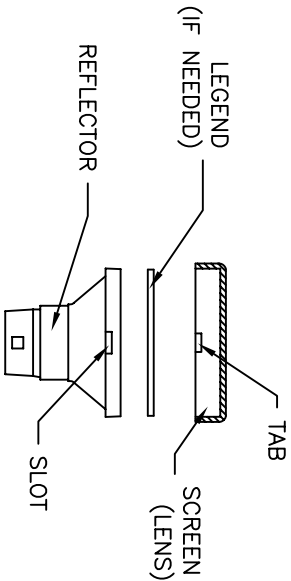
SHEET 1 OF 2

TITLE	A02 SERIES INSTRUCTIONS		DRAWN	RAC
DATE	11/03/98	DRAWING NUMBER	QA24	REV
				APPROVED

DATE	REVISION RECORD	DWN.	OK.

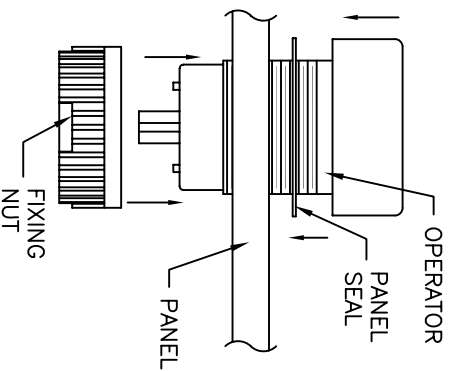
**STEP 2**

PLACE LEGEND (IF NEEDED) ON REFLECTOR AND SNAP SCREEN ONTO REFLECTOR BY LINING UP THE TABS ON THE SCREEN WITH THE SLOTS ON THE REFLECTOR AS SHOWN BELOW. MAKE SURE THAT THE SCREEN IS FIRMLY ATTACHED TO THE REFLECTOR.



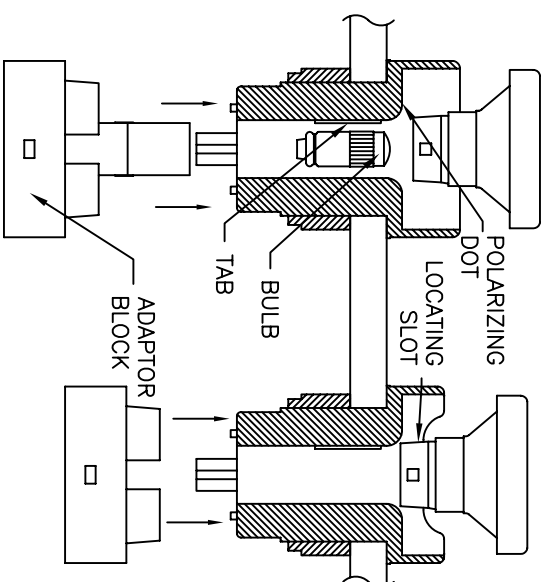
**STEP 3**

PLACE PANEL SEAL ONTO OPERATOR AS SHOWN BELOW. AFTER PANEL SEAL IS ON, PLACE OPERATOR IN THE PANEL AS SHOWN BELOW. HAND TIGHTEN FIXING NUT.



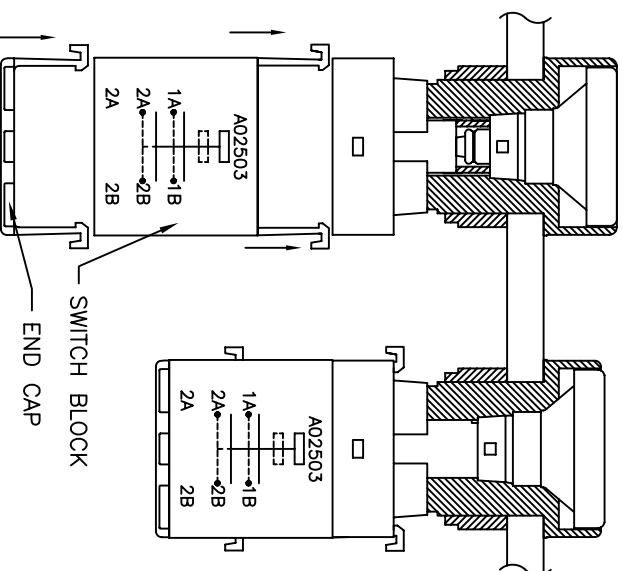
**STEP 4**

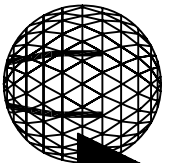
TAKE THE ADAPTOR BLOCK AND SNAP IT ONTO THE OPERATOR. THEN TAKE BULB (IF NEEDED) AND PLACE INTO THE ADAPTOR BLOCK MAKING SURE THAT THE BULB IS IN ALL THE WAY. NEXT LINE UP THE LOCATING SLOT IN THE REFLECTOR WITH THE POLARIZING DOT OR WITH THE TAB, WITH BOTH PIECES LINED UP SNAP REFLECTOR FIRMLY IN PLACE.



**STEP 5**

LINE UP SWITCH BLOCK AND END CAP AND THEN SNAP THEM ONTO THE ADAPTOR BLOCK AS SHOWN.





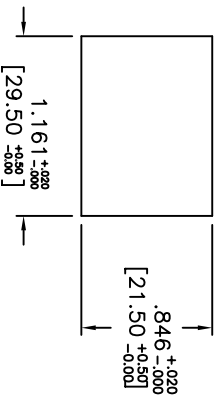
# APEM®

**APEM COMPONENTS, INC.**  
 U.S.A. 1-877-246-7890  
 FAX: (781)-245-4531  
 E-MAIL: INFO@APEM.COM

## A02 SERIES ASSEMBLY INSTRUCTIONS FOR RECTANGULAR BEZELS

### STEP 1

DRILL OR PUNCH HOLE INTO PANEL USING ONE OF THE SIZES BELOW.  
 PANEL THICKNESS: .236 [6.00] MAX.

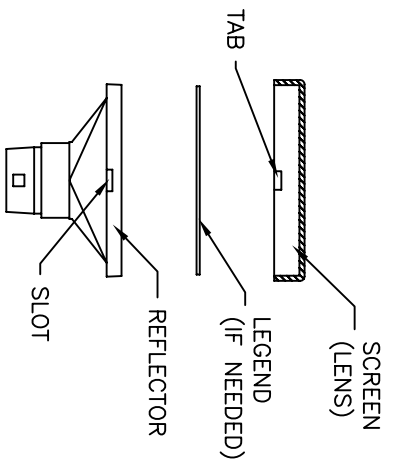


TITLE	A02 SERIES INSTRUCTIONS		DRAWN	RAC
DATE	11/03/98	DRAWING NUMBER	AQ24	REV
				APPROVED
REVISION RECORD				
DATE				DWN. OK.

SHEET 2 OF 2

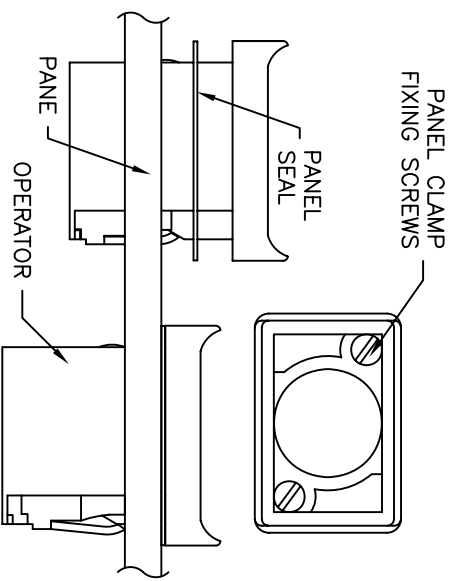
### STEP 2

PLACE LEGEND (IF NEEDED) ON REFLECTOR AND SNAP SCREEN ONTO REFLECTOR BY LINING UP THE TABS ON THE SCREEN WITH THE SLOTS ON THE REFLECTOR AS SHOWN BELOW. MAKE SURE THAT THE SCREEN IS FIRMLY ATTACHED TO THE REFLECTOR.



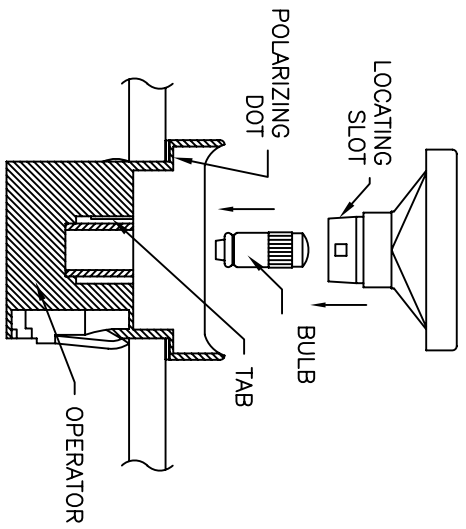
### STEP 3

PLACE PANEL SEAL ONTO OPERATOR AS SHOWN BELOW. AFTER PANEL SEAL IS ON, PLACE OPERATOR IN THE PANEL AS SHOWN BELOW. TIGHTEN PANEL CLAMP FIXING SCREWS UNTIL OPERATOR IS FIRMLY IN PLACE.



### STEP 4

TAKE BULB (IF NEEDED) AND PLACE INTO THE OPERATOR MAKING SURE THAT THE BULB IS IN ALL THE WAY. NEXT LINE UP THE LOCATING SLOT IN THE REFLECTOR WITH THE POLARIZING DOT OR THE TAB, WITH BOTH PIECES LINED UP SNAP REFLECTOR FIRMLY IN PLACE.



\*SOME REFLECTORS HAVE THE BULBS BUILT INTO THEM.

### STEP 5

LINE UP SWITCH BLOCK AND END CAP AND THEN SNAP THEM ONTO THE OPERATOR AS SHOWN.

