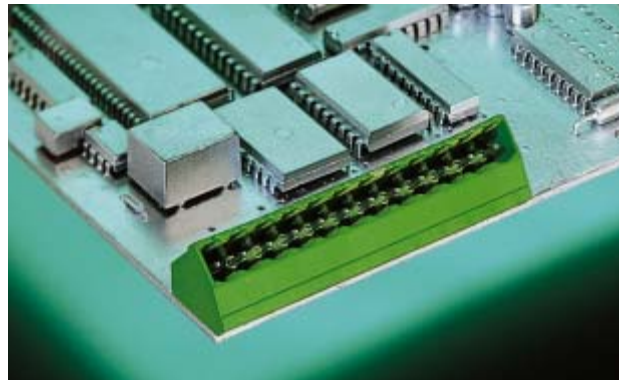
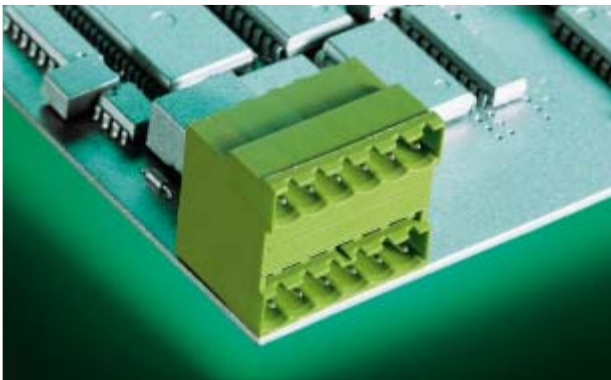


STL 975 HORIZONTAL

STLZ 990



STL 975/.. G - 5,0 - H - green

STLZ 990/.. G - 5,08 - green



**2-24 poles, Spacing 5,0 mm
insert required no. of poles ..**

**2-24 poles, Spacing 5,08 mm
insert required no. of poles ..**



How to order see page 11

How to order see page 11

Ratings:

		
Rated Voltage	300 V	250 V
Rated Current	15 A	12 A (T60)
Overvoltage Category		III
Rating Impulse Voltage/Dirt Level		4 kV/3

Ratings:

		
Rated Voltage	300 V	250 V
Rated Current	15 A	12 A (T60)
Overvoltage Category		III
Rating Impulse Voltage/Dirt Level		4 kV/3

Dimensions

Spacing	5,0 mm
PCB Hole Diameter	1,4 mm

Materials

Insulating Material	PA
Flammability Class	UL94 V-0
Temperature Range	-30°C/+105°C
Contact Pin	Cu

Colour
green

RAL 6018

Dimensions

Spacing	5,0 mm
PCB Hole Diameter	1,4 mm

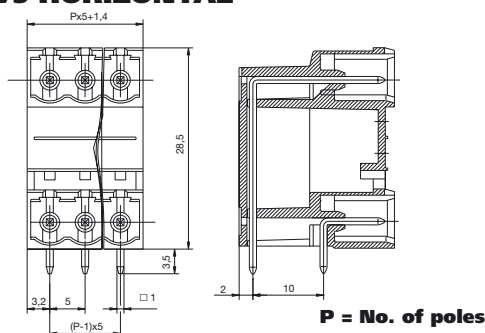
Materials

Insulating Material	PA
Flammability Class	UL94 V-0
Temperature Range	-30°C/+105°C
Contact Pin	Cu

Colour
green

RAL 6018

STL 975 HORIZONTAL



STLZ 990

