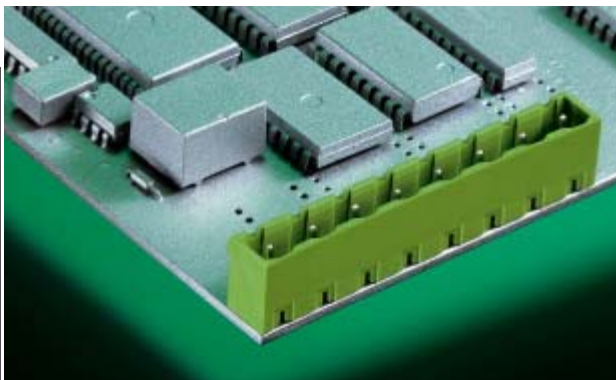




**PTR**

A Phoenix Mecano Company

**STLZ 960 VERTICAL**

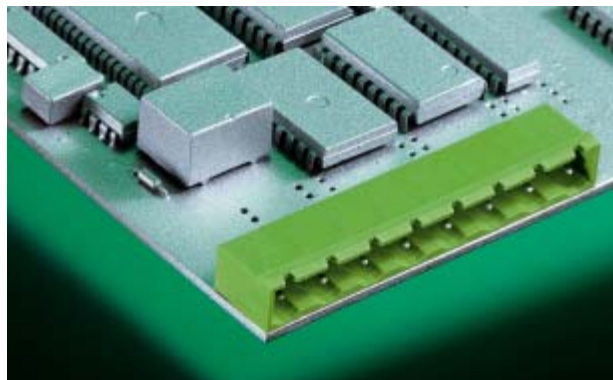


**STLZ 960/.. G - 7,62 - V - green**

**2-16 poles, Spacing 7,62 mm  
insert required no. of poles ..**

How to order see page 11

**STLZ 960 HORIZONTAL**



**STLZ 960/.. G - 7,62 - H - green**

**2-16 poles, Spacing 7,62 mm  
insert required no. of poles ..**

How to order see page 11

**Ratings:**



Rated Voltage	300 V	400 V
Rated Current	15 A	12 A (T60)
Overvoltage Category		III
Rating Impulse Voltage/Dirt Level		6 kV/3

**Ratings:**



Rated Voltage	300 V	400 V
Rated Current	15 A	12 A (T60)
Overvoltage Category		III
Rating Impulse Voltage/Dirt Level		6 kV/3

**Dimensions**

Spacing	7,62 mm
PCB Hole Diameter	1,4 mm

**Materials**

Insulating Material	PA
Flammability Class	UL94 V-0
Temperature Range	-30°C/+105°C
Contact Pin	Cu

**Colour**  
green

RAL 6018

**Dimensions**

Spacing	7,62 mm
PCB Hole Diameter	1,4 mm

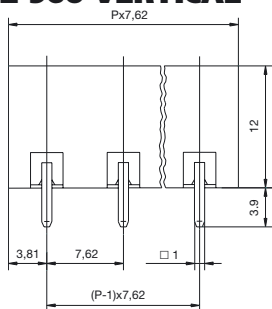
**Materials**

Insulating Material	PA
Flammability Class	UL94 V-0
Temperature Range	-30°C/+105°C
Contact Pin	Cu

**Colour**  
green

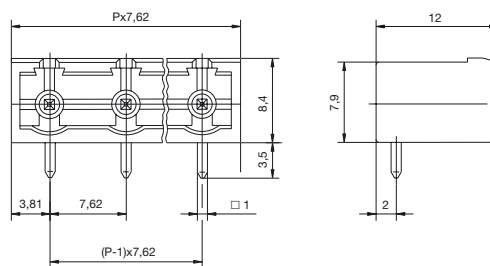
RAL 6018

**STLZ 960 VERTICAL**



**P = No. of poles**

**STLZ 960 HORIZONTAL**



**P = No. of poles**